

Product datasheet for **TA324478S**

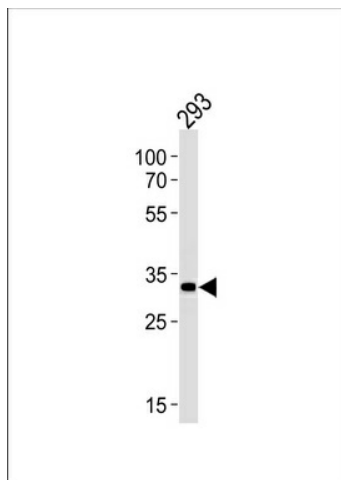
STUB1 Rabbit Polyclonal Antibody

Product data:

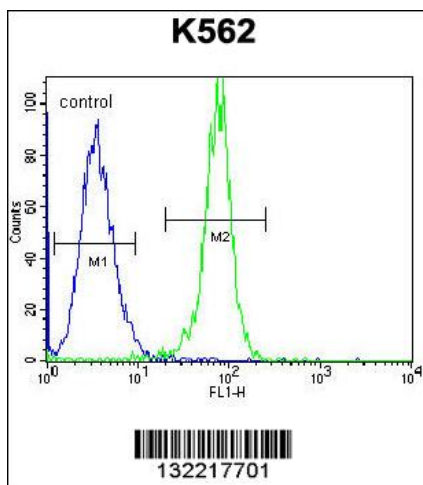
Product Type:	Primary Antibodies
Applications:	FC, WB
Recommended Dilution:	WB: 1:1000, FC: 1:10~50
Reactivity:	Human (Predicted: Mouse, Chicken)
Host:	Rabbit
Isotype:	IgG
Clonality:	Polyclonal
Immunogen:	This STUB1 antibody is generated from rabbits immunized with a KLH conjugated synthetic peptide between 236-263 amino acids from the C-terminal region of human STUB1.
Formulation:	Purified polyclonal antibody supplied in PBS with 0.09% (W/V) sodium azide.
Concentration:	lot specific
Purification:	This antibody is purified through a protein A column, followed by peptide affinity purification.
Conjugation:	Unconjugated
Storage:	Store at -20°C as received.
Stability:	Stable for 12 months from date of receipt.
Predicted Protein Size:	34856 Da
Gene Name:	STIP1 homology and U-box containing protein 1
Database Link:	NP_005852 Entrez Gene 56424 Mouse Entrez Gene 10273 Human Q9UNE7
Synonyms:	CHIP; HSPABP2; NY-CO-7; SCAR16; SDCCAG7; UBOX1
Protein Families:	Druggable Genome
Protein Pathways:	Ubiquitin mediated proteolysis



[View online »](#)

Product images:


STUB1 Antibody (C-term) (Cat.# [TA324478]) western blot analysis in 293 cell line lysates (35ug/lane). This demonstrates the STUB1 antibody detected the STUB1 protein (arrow).



STUB1 Antibody (C-term) (Cat. # [TA324478]) flow cytometric analysis of K562 cells (right histogram) compared to a negative control cell (left histogram). FITC-conjugated goat-anti-rabbit secondary antibodies were used for the analysis.