

Product datasheet for **TA324477**

TBP2 (TBPL2) Rabbit Polyclonal Antibody

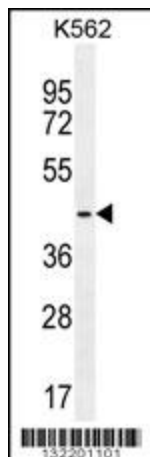
Product data:

Product Type:	Primary Antibodies
Applications:	IF, IHC, WB
Recommended Dilution:	WB: 1:1000, IHC: 1:10~50, IF: 1:10~50
Reactivity:	Human
Host:	Rabbit
Isotype:	IgG
Clonality:	Polyclonal
Immunogen:	This TBPL2 antibody is generated from rabbits immunized with a KLH conjugated synthetic peptide between 12-39 amino acids from the N-terminal region of human TBPL2.
Formulation:	Purified polyclonal antibody supplied in PBS with 0.09% (W/V) sodium azide.
Concentration:	lot specific
Purification:	This antibody is purified through a protein A column, followed by peptide affinity purification.
Conjugation:	Unconjugated
Storage:	Store at -20°C as received.
Stability:	Stable for 12 months from date of receipt.
Predicted Protein Size:	41524 Da
Gene Name:	TATA-box binding protein like 2
Database Link:	NP_950248 Entrez Gene 387332 Human Q6SJ96
Synonyms:	TBP2; TRF3
Protein Pathways:	Basal transcription factors, Huntington's disease

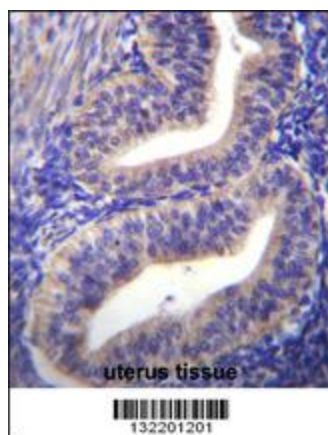


[View online »](#)

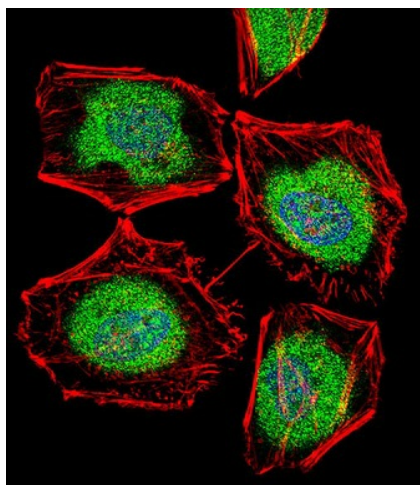
Product images:



TBPL2 Antibody (N-term) (Cat. #TA324477) western blot analysis in K562 cell line lysates (35ug/lane). This demonstrates the TBPL2 antibody detected the TBPL2 protein (arrow).



TBPL2 Antibody (N-term) (Cat. #TA324477) immunohistochemistry analysis in formalin fixed and paraffin embedded human uterus tissue followed by peroxidase conjugation of the secondary antibody and DAB staining. This data demonstrates the use of TBPL2 Antibody (N-term) for immunohistochemistry. Clinical relevance has not been evaluated.



IF image of HeLa cell stained with TBPL2 Antibody (N-term) (Cat#TA324477). HeLa cells were incubated with TBPL2 primary antibody (1:25, 1 h at 37°C). For secondary antibody, Alexa Fluor® 488 conjugated donkey anti-rabbit antibody (green) was used (1:400). Cytoplasmic actin was counterstained with Alexa Fluor® 555 (red) conjugated Phalloidin (7 units/ml). Nuclei were counterstained with DAPI (blue). TBPL2 immunoreactivity is localized to Nucleus and Cytoplasm significantly.