

## Product datasheet for **TA324476**

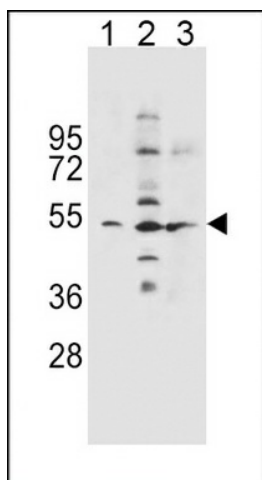
### SLC36A1 Rabbit Polyclonal Antibody

#### Product data:

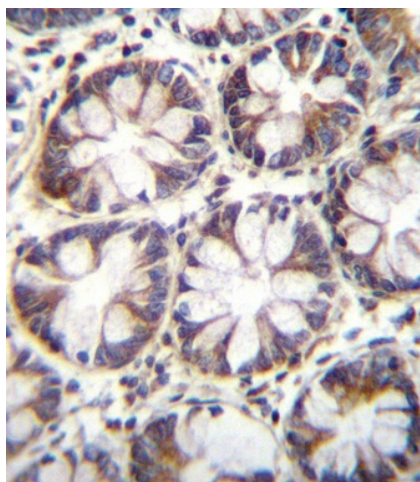
Product Type:	Primary Antibodies
Applications:	FC, IF, IHC, WB
Recommended Dilution:	WB: 1:1000, IHC: 1:10~50, IF: 1:10~50, FC: 1:10~50
Reactivity:	Human (Predicted: Mouse, Rat)
Host:	Rabbit
Isotype:	IgG
Clonality:	Polyclonal
Immunogen:	This SLC36A1 antibody is generated from rabbits immunized with a KLH conjugated synthetic peptide between 1-30 amino acids from the N-terminal region of human SLC36A1.
Formulation:	Purified polyclonal antibody supplied in PBS with 0.09% (W/V) sodium azide.
Concentration:	lot specific
Purification:	This antibody is purified through a protein A column, followed by peptide affinity purification.
Conjugation:	Unconjugated
Storage:	Store at -20°C as received.
Stability:	Stable for 12 months from date of receipt.
Predicted Protein Size:	53076 Da
Gene Name:	solute carrier family 36 member 1
Database Link:	<a href="#">NP_510968</a> <a href="#">Entrez Gene 155205 RatEntrez Gene 215335 MouseEntrez Gene 206358 Human Q7Z2H8</a>
Synonyms:	Dct1; LYAAT1; PAT1; TRAMD3
Protein Families:	Transmembrane



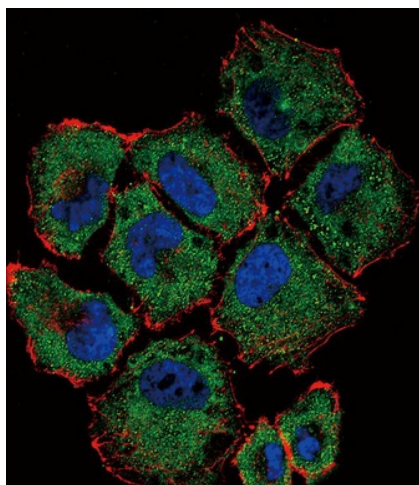
[View online »](#)

**Product images:**

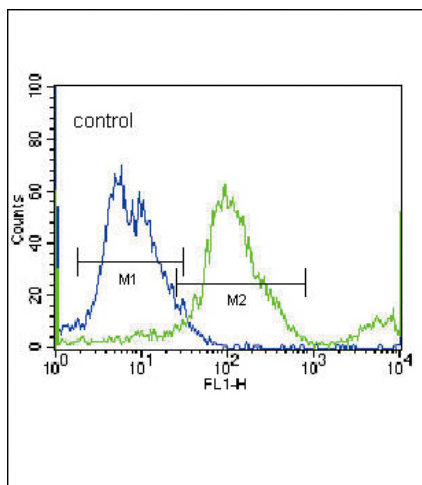
SLC36A1 Antibody (N-term) (Cat. #TA324476) western blot analysis in NCI-H460 (lane 1), K562 (lane 2), A549 (lane 3) cell line lysates (35ug/lane). This demonstrates the SLC36A1 antibody detected the SLC36A1 protein (arrow).



SLC36A1 Antibody (N-term) (Cat. #TA324476) immunohistochemistry analysis in formalin fixed and paraffin embedded human rectum tissue followed by peroxidase conjugation of the secondary antibody and DAB staining. This data demonstrates the use of SLC36A1 Antibody (N-term) for immunohistochemistry. Clinical relevance has not been evaluated.



Confocal immunofluorescent analysis of SLC36A1 Antibody (N-term) (Cat#TA324476) with NCI-H460 cell followed by Alexa Fluor 488-conjugated goat anti-rabbit IgG (green). Actin filaments have been labeled with Alexa Fluor 555 phalloidin (red). DAPI was used to stain the cell nuclear (blue).



SLC36A1 Antibody (N-term) (Cat. #TA324476) flow cytometric analysis of NCI-H460 cells (right histogram) compared to a negative control cell (left histogram). FITC-conjugated donkey-anti-rabbit secondary antibodies were used for the analysis.