

Product datasheet for **TA324475S**

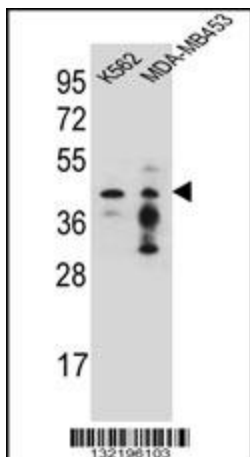
PCYT1A Rabbit Polyclonal Antibody

Product data:

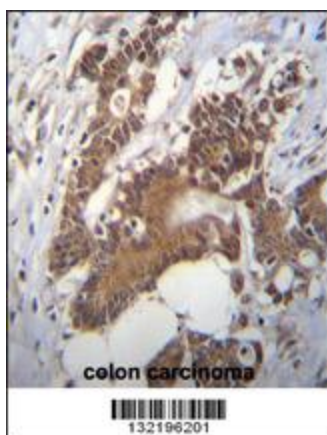
Product Type:	Primary Antibodies
Applications:	IF, IHC, WB
Recommended Dilution:	IHC: 1:10~50, WB: 1:1000, IF: 1:10~50
Reactivity:	Human (Predicted: Mouse, Rat, Hamster)
Host:	Rabbit
Isotype:	IgG
Clonality:	Polyclonal
Immunogen:	This PCYT1A antibody is generated from rabbits immunized with a KLH conjugated synthetic peptide between 27-54 amino acids from the N-terminal region of human PCYT1A.
Formulation:	Purified polyclonal antibody supplied in PBS with 0.09% (W/V) sodium azide.
Concentration:	lot specific
Purification:	This antibody is purified through a protein A column, followed by peptide affinity purification.
Conjugation:	Unconjugated
Storage:	Store at -20°C as received.
Stability:	Stable for 12 months from date of receipt.
Predicted Protein Size:	41731 Da
Gene Name:	phosphate cytidyltransferase 1, choline, alpha
Database Link:	NP_005008 Entrez Gene 13026 Mouse Entrez Gene 140544 Rat Entrez Gene 5130 Human P49585
Synonyms:	CCTA; CT; CTA; CTPCT; PCYT1; SMDCRD
Protein Pathways:	Glycerophospholipid metabolism, Metabolic pathways



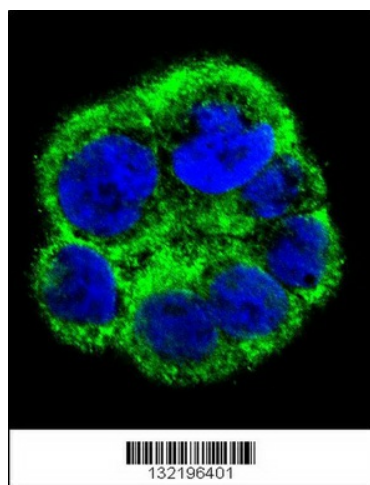
[View online »](#)

Product images:

PCYT1A Antibody (N-term) (Cat. # [TA324475]) western blot analysis in K562, MDA-MB453 cell line lysates (35ug/lane). This demonstrates the PCYT1A antibody detected the PCYT1A protein (arrow).



PCYT1A Antibody (N-term) (Cat. # [TA324475]) immunohistochemistry analysis in formalin fixed and paraffin embedded human colon carcinoma followed by peroxidase conjugation of the secondary antibody and DAB staining. This data demonstrates the use of PCYT1A Antibody (N-term) for immunohistochemistry. Clinical relevance has not been evaluated.



Confocal immunofluorescent analysis of PCYT1A Antibody (N-term) (Cat#[TA324475]) with WiDr cell followed by Alexa Fluor 488-conjugated goat anti-rabbit IgG (green). DAPI was used to stain the cell nuclear (blue).