

## Product datasheet for **TA324474**

### **BUB1B-PAK6 Rabbit Polyclonal Antibody**

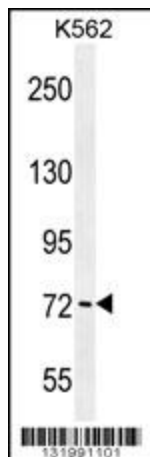
#### **Product data:**

Product Type:	Primary Antibodies
Applications:	IF, IHC, WB
Recommended Dilution:	WB: 1:1000, IHC: 1:10~50, IF: 1:10~50
Reactivity:	Human
Host:	Rabbit
Isotype:	IgG
Clonality:	Polyclonal
Immunogen:	This PAK6 antibody is generated from rabbits immunized with a KLH conjugated synthetic peptide between 268-297 amino acids from the Central region of human PAK6.
Formulation:	Purified polyclonal antibody supplied in PBS with 0.09% (W/V) sodium azide.
Concentration:	lot specific
Purification:	This antibody is purified through a protein A column, followed by peptide affinity purification.
Conjugation:	Unconjugated
Storage:	Store at -20°C as received.
Stability:	Stable for 12 months from date of receipt.
Predicted Protein Size:	74869 Da
Gene Name:	BUB1B-PAK6 readthrough
Database Link:	<a href="#">NP_001122100</a> <a href="#">Entrez Gene 106821730 Human</a> <a href="#">Q9NQU5</a>
Synonyms:	PAK5

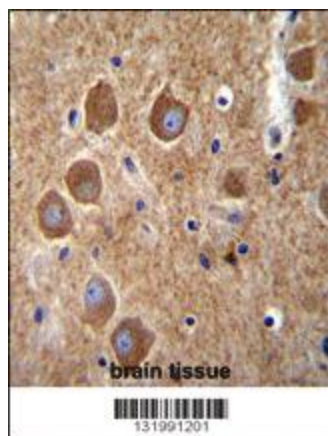


[View online »](#)

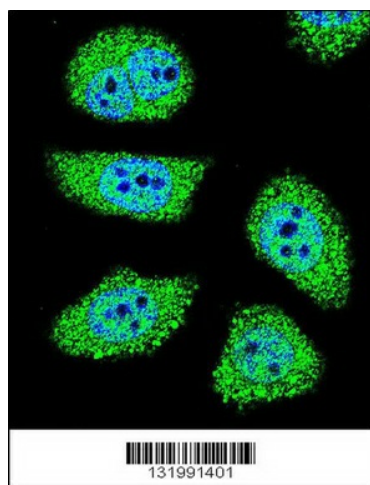
## Product images:



PAK6 Antibody (Center) (Cat. #TA324474) western blot analysis in K562 cell line lysates (35ug/lane). This demonstrates the PAK6 antibody detected the PAK6 protein (arrow).



PAK6 Antibody (Center) (Cat. #TA324474) immunohistochemistry analysis in formalin fixed and paraffin embedded human brain tissue followed by peroxidase conjugation of the secondary antibody and DAB staining. This data demonstrates the use of PAK6 Antibody (Center) for immunohistochemistry. Clinical relevance has not been evaluated.



Confocal immunofluorescent analysis of PAK6 Antibody (Center) (Cat#TA324474) with U-251MG cell followed by Alexa Fluor 488-conjugated goat anti-rabbit IgG (green). DAPI was used to stain the cell nuclear (blue).