

Product datasheet for **TA324472S**

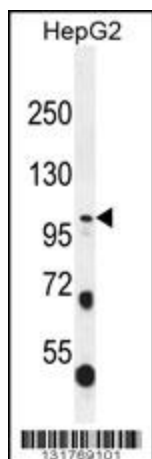
COL21A1 Rabbit Polyclonal Antibody

Product data:

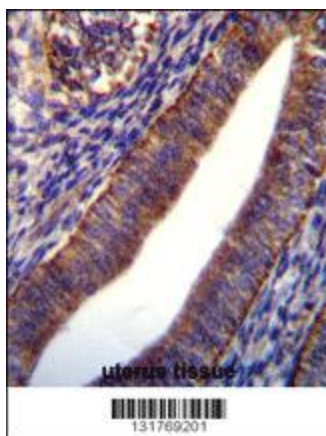
Product Type:	Primary Antibodies
Applications:	IF, IHC, WB
Recommended Dilution:	WB: 1:1000, IHC: 1:10~50, IF: 1:10~50
Reactivity:	Human
Host:	Rabbit
Isotype:	IgG
Clonality:	Polyclonal
Immunogen:	This COL21A1 antibody is generated from rabbits immunized with a KLH conjugated synthetic peptide between 204-232 amino acids from the N-terminal region of human COL21A1.
Formulation:	Purified polyclonal antibody supplied in PBS with 0.09% (W/V) sodium azide.
Concentration:	lot specific
Purification:	This antibody is purified through a protein A column, followed by peptide affinity purification.
Conjugation:	Unconjugated
Storage:	Store at -20°C as received.
Stability:	Stable for 12 months from date of receipt.
Predicted Protein Size:	99369 Da
Gene Name:	collagen type XXI alpha 1 chain
Database Link:	NP_110447 Entrez Gene 81578 Human Q96P44
Synonyms:	COLA1L; dJ682J15.1; dJ708F5.1; FP633



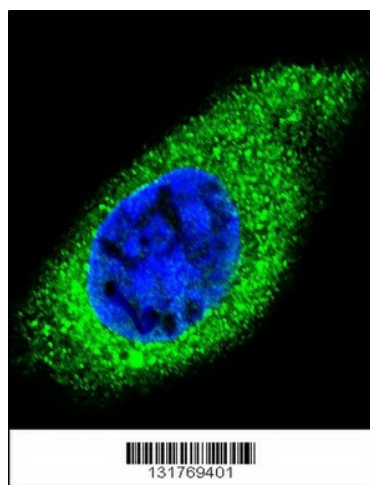
[View online »](#)

Product images:


COL21A1 Antibody (N-term) (Cat. # [TA324472]) western blot analysis in HepG2 cell line lysates (35ug/lane). This demonstrates the COL21A1 antibody detected the COL21A1 protein (arrow).



COL21A1 Antibody (N-term) (Cat. # [TA324472]) immunohistochemistry analysis in formalin fixed and paraffin embedded human uterus tissue followed by peroxidase conjugation of the secondary antibody and DAB staining. This data demonstrates the use of COL21A1 Antibody (N-term) for immunohistochemistry. Clinical relevance has not been evaluated.



Confocal immunofluorescent analysis of COL21A1 Antibody (N-term) (Cat#[TA324472]) with HepG2 cell followed by Alexa Fluor 488-conjugated goat anti-rabbit IgG (green). DAPI was used to stain the cell nuclear (blue).