

## Product datasheet for **TA324471S**

### MASPIN (SERPINB5) Rabbit Polyclonal Antibody

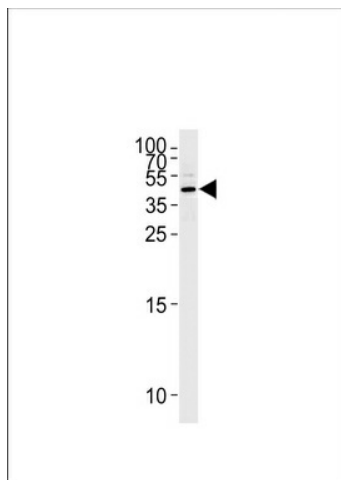
#### Product data:

Product Type:	Primary Antibodies
Applications:	IF, IHC, WB
Recommended Dilution:	WB: 1:1000, IHC: 1:50~100, IF: 1:10~50
Reactivity:	Human, Mouse
Host:	Rabbit
Isotype:	IgG
Clonality:	Polyclonal
Immunogen:	This Maspin antibody is generated from rabbits immunized with a KLH conjugated synthetic peptide between 94-123 amino acids from the Central region of human Maspin.
Formulation:	Purified polyclonal antibody supplied in PBS with 0.09% (W/V) sodium azide.
Concentration:	lot specific
Purification:	This antibody is purified through a protein A column, followed by peptide affinity purification.
Conjugation:	Unconjugated
Storage:	Store at -20°C as received.
Stability:	Stable for 12 months from date of receipt.
Predicted Protein Size:	42100 Da
Gene Name:	serpin family B member 5
Database Link:	<a href="#">NP_002630</a> <a href="#">Entrez Gene 20724 Mouse</a> <a href="#">Entrez Gene 5268 Human</a> <a href="#">P36952</a>
Synonyms:	maspin; PI5
Protein Families:	Druggable Genome, Secreted Protein
Protein Pathways:	p53 signaling pathway

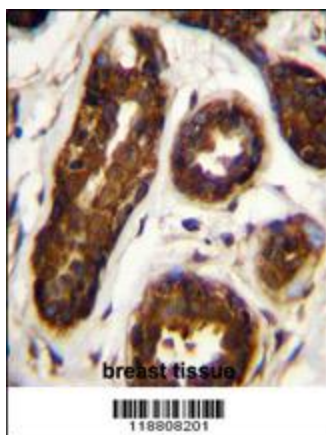


[View online »](#)

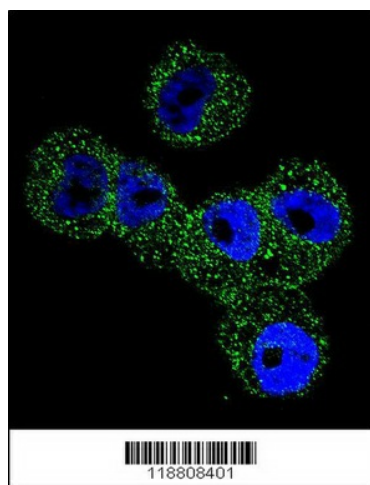
## Product images:



Western blot analysis of lysate from Hela cell line, using Maspin Antibody (Center) (Cat. # [TA324471]).[TA324471] was diluted at 1:1000 at each lane. A goat anti-rabbit IgG H&L (HRP) at 1:5000 dilution was used as the secondary antibody. Lysate at 35ug per lane.



Maspin Antibody (Center) (Cat. # [TA324471]) immunohistochemistry analysis in formalin fixed and paraffin embedded human breast tissue followed by peroxidase conjugation of the secondary antibody and DAB staining. This data demonstrates the use of Maspin Antibody (Center) for immunohistochemistry. Clinical relevance has not been evaluated.



Confocal immunofluorescent analysis of Maspin Antibody (Center) (Cat#[TA324471]) with A2058 cell followed by Alexa Fluor 488-conjugated goat anti-rabbit IgG (green). DAPI was used to stain the cell nuclear (blue).