

Product datasheet for **TA324470S**

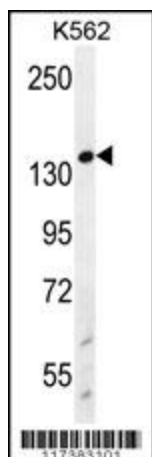
WRN Rabbit Polyclonal Antibody

Product data:

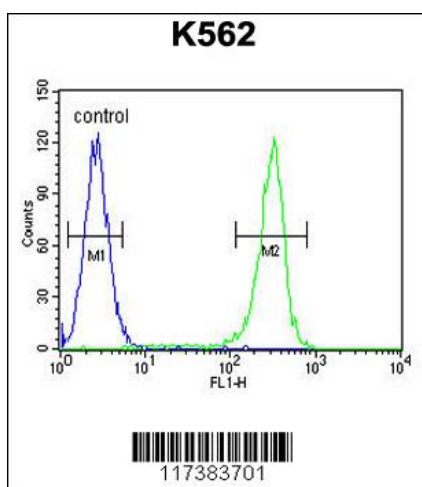
Product Type:	Primary Antibodies
Applications:	FC, WB
Recommended Dilution:	WB: 1:1000, FC: 1:10~50
Reactivity:	Human
Host:	Rabbit
Isotype:	IgG
Clonality:	Polyclonal
Immunogen:	This WRN antibody is generated from rabbits immunized with a KLH conjugated synthetic peptide between 787-816 amino acids from the Central region of human WRN.
Formulation:	Purified polyclonal antibody supplied in PBS with 0.09% (W/V) sodium azide.
Concentration:	lot specific
Purification:	This antibody is purified through a protein A column, followed by peptide affinity purification.
Conjugation:	Unconjugated
Storage:	Store at -20°C as received.
Stability:	Stable for 12 months from date of receipt.
Predicted Protein Size:	162461 Da
Gene Name:	Werner syndrome RecQ like helicase
Database Link:	NP_000544 Entrez Gene 7486 Human Q14191
Synonyms:	RECQ3; RECQL2; RECQL3
Protein Families:	Druggable Genome, Stem cell - Pluripotency

[View online »](#)

Product images:



WRN Antibody (Center T802) (Cat. #TA324470]) western blot analysis in K562 cell line lysates (35ug/lane). This demonstrates the WRN antibody detected the WRN protein (arrow).



WRN Antibody (Center T802) (Cat. #TA324470]) flow cytometric analysis of K562 cells (right histogram) compared to a negative control cell (left histogram). FITC-conjugated goat-anti-rabbit secondary antibodies were used for the analysis.