

## Product datasheet for **TA324469S**

### **TBX6 Rabbit Polyclonal Antibody**

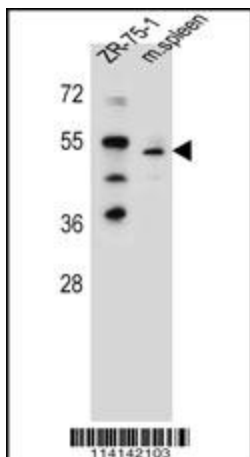
#### **Product data:**

Product Type:	Primary Antibodies
Applications:	IF, WB
Recommended Dilution:	WB: 1:1000, IF: 1:10~50
Reactivity:	Human, Mouse (Predicted: Rat, Bovine)
Host:	Rabbit
Isotype:	IgG
Clonality:	Polyclonal
Immunogen:	This TBX6 antibody is generated from rabbits immunized with a KLH conjugated synthetic peptide between 264-293 amino acids from the Central region of human TBX6.
Formulation:	Purified polyclonal antibody supplied in PBS with 0.09% (W/V) sodium azide.
Concentration:	lot specific
Purification:	This antibody is purified through a protein A column, followed by peptide affinity purification.
Conjugation:	Unconjugated
Storage:	Store at -20°C as received.
Stability:	Stable for 12 months from date of receipt.
Predicted Protein Size:	47045 Da
Gene Name:	T-box 6
Database Link:	<a href="#">NP_004599</a> <a href="#">Entrez Gene 21389 MouseEntrez Gene 365371 RatEntrez Gene 6911 Human</a> <a href="#">O95947</a>
Synonyms:	SCDO5
Protein Families:	Transcription Factors

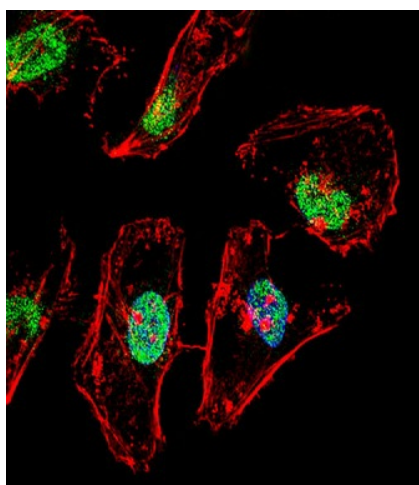


[View online »](#)

## Product images:



TBX6 Antibody (Center) (Cat. #[TA324469]) western blot analysis in ZR-75-1 cell line and mouse spleen tissue lysates (35ug/lane). This demonstrates the TBX6 antibody detected the TBX6 protein (arrow).



IF image of HeLa cell stained with TBX6 Antibody (Center) (Cat#[TA324469]). HeLa cells were incubated with TBX6 primary antibody (1:25, 1 h at 37°C). For secondary antibody, Alexa Fluor® 488 conjugated donkey anti-rabbit antibody (green) was used (1:400). Cytoplasmic actin was counterstained with Alexa Fluor® 555 (red) conjugated Phalloidin (7 units/ml). Nuclei were counterstained with DAPI (blue). TBX6 immunoreactivity is localized to nucleus significantly.