

## Product datasheet for **TA324468**

### Pur B (PURB) Rabbit Polyclonal Antibody

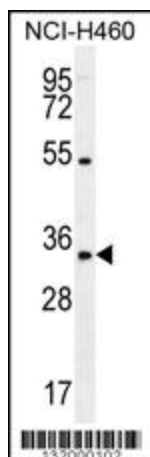
#### Product data:

Product Type:	Primary Antibodies
Applications:	FC, IF, WB
Recommended Dilution:	IF: 1:10~50, WB: 1:1000, FC: 1:10~50
Reactivity:	Human (Predicted: Mouse, Rat)
Host:	Rabbit
Isotype:	IgG
Clonality:	Polyclonal
Immunogen:	This PURB antibody is generated from rabbits immunized with a KLH conjugated synthetic peptide between 260-289 amino acids from the C-terminal region of human PURB.
Formulation:	Purified polyclonal antibody supplied in PBS with 0.09% (W/V) sodium azide.
Concentration:	lot specific
Purification:	This antibody is purified through a protein A column, followed by peptide affinity purification.
Conjugation:	Unconjugated
Storage:	Store at -20°C as received.
Stability:	Stable for 12 months from date of receipt.
Predicted Protein Size:	33241 Da
Gene Name:	purine-rich element binding protein B
Database Link:	<a href="#">NP_150093</a> <a href="#">Entrez Gene 19291 Mouse</a> <a href="#">Entrez Gene 498407 Rat</a> <a href="#">Entrez Gene 5814 Human</a> <a href="#">Q96QR8</a>
Synonyms:	PURBETA

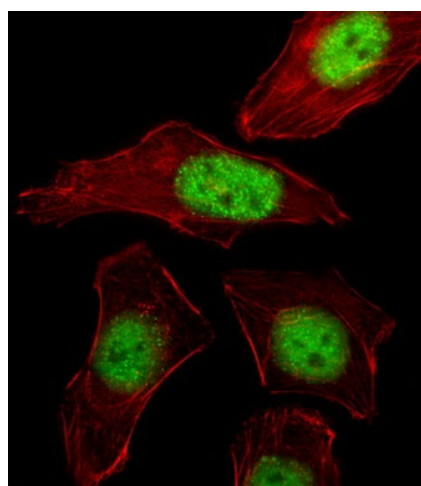


[View online »](#)

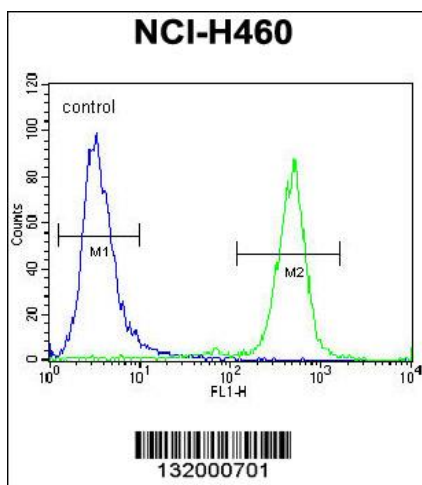
## Product images:



PURB Antibody (C-term) (Cat. #TA324468) western blot analysis in NCI-H460 cell line lysates (35ug/lane). This demonstrates the PURB antibody detected the PURB protein (arrow).



IF image of A549 cell stained with PURB Antibody (C-term) (Cat#TA324468). A549 cells were incubated with PURB primary antibody (1:25, 1 h at 37°C). For secondary antibody, Alexa Fluor® 488 conjugated donkey anti-rabbit antibody (green) was used (1:400). Cytoplasmic actin was counterstained with Alexa Fluor® 555 (red) conjugated Phalloidin (7 units/ml). PURB immunoreactivity is localized to Nucleus significantly.



PURB Antibody (C-term) (Cat. #TA324468) flow cytometric analysis of NCI-H460 cells (right histogram) compared to a negative control cell (left histogram). FITC-conjugated goat-anti-rabbit secondary antibodies were used for the analysis.