

Product datasheet for **TA324467S**

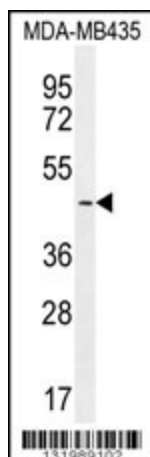
LEF1 Rabbit Polyclonal Antibody

Product data:

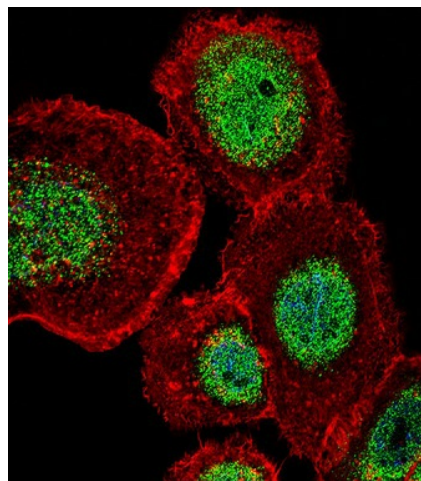
Product Type:	Primary Antibodies
Applications:	IF, WB
Recommended Dilution:	WB: 1:1000, IF: 1:10~50
Reactivity:	Human (Predicted: Mouse, Rat)
Host:	Rabbit
Isotype:	IgG
Clonality:	Polyclonal
Immunogen:	This LEF1 antibody is generated from rabbits immunized with a KLH conjugated synthetic peptide between 10-37 amino acids from the N-terminal region of human LEF1.
Formulation:	Purified polyclonal antibody supplied in PBS with 0.09% (W/V) sodium azide.
Concentration:	lot specific
Purification:	This antibody is purified through a protein A column, followed by peptide affinity purification.
Conjugation:	Unconjugated
Storage:	Store at -20°C as received.
Stability:	Stable for 12 months from date of receipt.
Predicted Protein Size:	44201 Da
Gene Name:	lymphoid enhancer binding factor 1
Database Link:	NP_001124185 Entrez Gene 16842 Mouse Entrez Gene 161452 Rat Entrez Gene 51176 Human Q9UJU2
Synonyms:	LEF-1; TCF1ALPHA; TCF7L3; TCF10
Protein Families:	Adult stem cells, Druggable Genome, ES Cell Differentiation/IPS, Transcription Factors
Protein Pathways:	Acute myeloid leukemia, Adherens junction, Arrhythmogenic right ventricular cardiomyopathy (ARVC), Basal cell carcinoma, Colorectal cancer, Endometrial cancer, Melanogenesis, Pathways in cancer, Prostate cancer, Thyroid cancer, Wnt signaling pathway



[View online »](#)

Product images:

LEF1 Antibody (N-term) (Cat. #[TA324467]) western blot analysis in MDA-MB435 cell line lysates (35ug/lane). This demonstrates the LEF1 antibody detected the LEF1 protein (arrow).



IF image of A431 cell stained with LEF1 Antibody (N-term) (Cat#[TA324467]). A431 cells were incubated with LEF1 primary antibody (1:25, 1 h at 37°C). For secondary antibody, Alexa Fluor® 488 conjugated donkey anti-rabbit antibody (green) was used (1:400). Cytoplasmic actin was counterstained with Alexa Fluor® 555 (red) conjugated Phalloidin (7 units/ml). Nuclei were counterstained with DAPI (blue). LEF1 immunoreactivity is localized to Nucleus significantly and Cytoplasm weakly.