

Product datasheet for **TA324466**

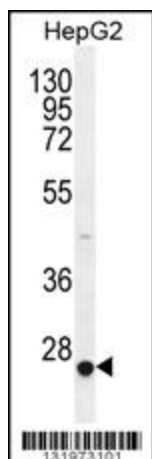
CACNG6 Rabbit Polyclonal Antibody

Product data:

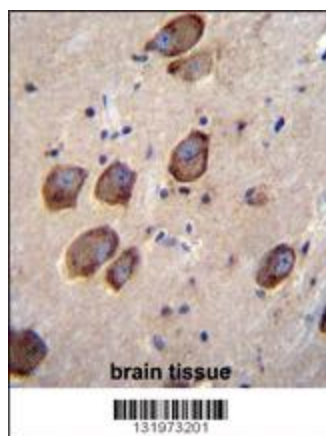
Product Type:	Primary Antibodies
Applications:	IF, IHC, WB
Recommended Dilution:	WB: 1:1000, IHC: 1:10~50, IF: 1:10~50
Reactivity:	Human (Predicted: Mouse)
Host:	Rabbit
Isotype:	IgG
Clonality:	Polyclonal
Immunogen:	This CACNG6 antibody is generated from rabbits immunized with a KLH conjugated synthetic peptide between 108-136 amino acids from the Central region of human CACNG6.
Formulation:	Purified polyclonal antibody supplied in PBS with 0.09% (W/V) sodium azide.
Concentration:	lot specific
Purification:	This antibody is purified through a protein A column, followed by peptide affinity purification.
Conjugation:	Unconjugated
Storage:	Store at -20°C as received.
Stability:	Stable for 12 months from date of receipt.
Predicted Protein Size:	28129 Da
Gene Name:	calcium voltage-gated channel auxiliary subunit gamma 6
Database Link:	NP_114103 Entrez Gene 54378 Mouse Entrez Gene 59285 Human Q9BXT2
Synonyms:	2310033H20Rik; AW050150; calcium channel; gamma subunit 6; MGC144251; MGC144252; voltage-dependent; voltage-dependent calcium channel gamma-6 subunit
Protein Families:	Druggable Genome, Ion Channels: Other, Transmembrane
Protein Pathways:	Arrhythmogenic right ventricular cardiomyopathy (ARVC), Cardiac muscle contraction, Dilated cardiomyopathy, Hypertrophic cardiomyopathy (HCM), MAPK signaling pathway



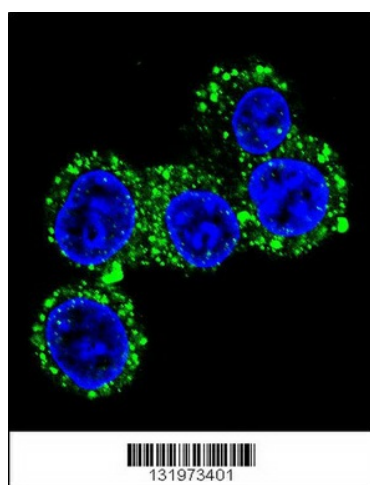
[View online »](#)

Product images:


CACNG6 Antibody (Center) (Cat. #TA324466) western blot analysis in HepG2 cell line lysates (35ug/lane). This demonstrates the CACNG6 antibody detected the CACNG6 protein (arrow).



CACNG6 Antibody (Center) (Cat. #TA324466) immunohistochemistry analysis in formalin fixed and paraffin embedded human brain tissue followed by peroxidase conjugation of the secondary antibody and DAB staining. This data demonstrates the use of CACNG6 Antibody (Center) for immunohistochemistry. Clinical relevance has not been evaluated.



Confocal immunofluorescent analysis of CACNG6 Antibody (Center) (Cat#TA324466) with HepG2 cell followed by Alexa Fluor 488-conjugated goat anti-rabbit IgG (green). DAPI was used to stain the cell nuclear (blue).