

Product datasheet for **TA324465S**

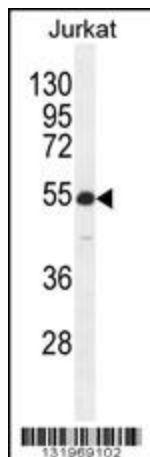
RBPSUHL (RBPJL) Rabbit Polyclonal Antibody

Product data:

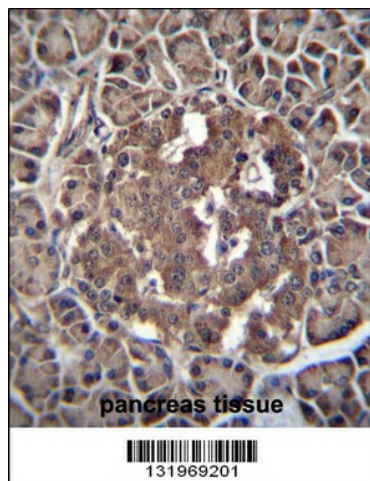
Product Type:	Primary Antibodies
Applications:	FC, IHC, WB
Recommended Dilution:	WB: 1:1000, IHC: 1:10~50, FC: 1:10~50
Reactivity:	Human
Host:	Rabbit
Isotype:	IgG
Clonality:	Polyclonal
Immunogen:	This RBPJL antibody is generated from rabbits immunized with a KLH conjugated synthetic peptide between 8-36 amino acids from the N-terminal region of human RBPJL.
Formulation:	Purified polyclonal antibody supplied in PBS with 0.09% (W/V) sodium azide.
Concentration:	lot specific
Purification:	This antibody is purified through a protein A column, followed by peptide affinity purification.
Conjugation:	Unconjugated
Storage:	Store at -20°C as received.
Stability:	Stable for 12 months from date of receipt.
Predicted Protein Size:	56751 Da
Gene Name:	recombination signal binding protein for immunoglobulin kappa J region like
Database Link:	NP_055091 Entrez Gene 11317 Human Q9UBG7
Synonyms:	RBPL; RBPSUHL; SUHL
Protein Families:	Druggable Genome, Transcription Factors
Protein Pathways:	Notch signaling pathway



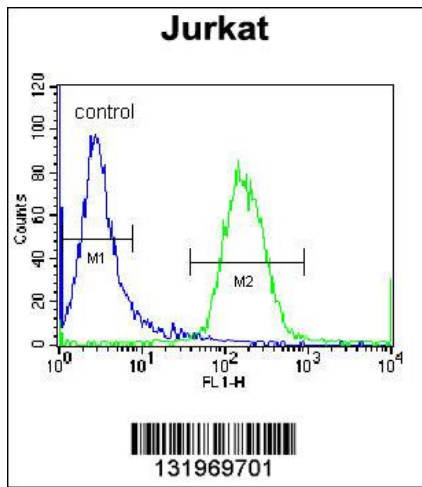
[View online »](#)

Product images:

RBPJL Antibody (N-term) (Cat. # [TA324465]) western blot analysis in Jurkat cell line lysates (35ug/lane). This demonstrates the RBPJL antibody detected the RBPJL protein (arrow).



RBPJL Antibody (N-term) (Cat. # [TA324465]) immunohistochemistry analysis in formalin fixed and paraffin embedded human pancreas tissue followed by peroxidase conjugation of the secondary antibody and DAB staining. This data demonstrates the use of RBPJL Antibody (N-term) for immunohistochemistry. Clinical relevance has not been evaluated.



RBPJL Antibody (N-term) (Cat. #[TA324465]) flow cytometric analysis of Jurkat cells (right histogram) compared to a negative control cell (left histogram). FITC-conjugated donkey-anti-rabbit secondary antibodies were used for the analysis.