

## Product datasheet for **TA324464S**

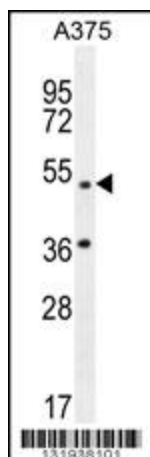
### AP1M1 Rabbit Polyclonal Antibody

#### Product data:

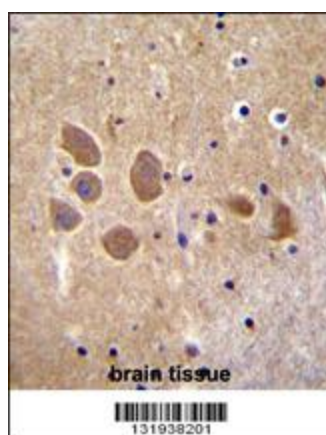
Product Type:	Primary Antibodies
Applications:	IF, IHC, WB
Recommended Dilution:	WB: 1:1000, IHC: 1:10~50, IF: 1:10~50
Reactivity:	Human (Predicted: Mouse, Rat, Bovine)
Host:	Rabbit
Isotype:	IgG
Clonality:	Polyclonal
Immunogen:	This AP1M1 antibody is generated from rabbits immunized with a KLH conjugated synthetic peptide between 199-227 amino acids from the Central region of human AP1M1.
Formulation:	Purified polyclonal antibody supplied in PBS with 0.09% (W/V) sodium azide.
Concentration:	lot specific
Purification:	This antibody is purified through a protein A column, followed by peptide affinity purification.
Conjugation:	Unconjugated
Storage:	Store at -20°C as received.
Stability:	Stable for 12 months from date of receipt.
Predicted Protein Size:	48587 Da
Gene Name:	adaptor related protein complex 1 mu 1 subunit
Database Link:	<a href="#">NP_115882</a> <a href="#">Entrez Gene 11767 Mouse</a> <a href="#">Entrez Gene 306332 Rat</a> <a href="#">Entrez Gene 8907 Human</a> <a href="#">Q9BXS5</a>
Synonyms:	AP47; CLAPM2; CLTNM; MU-1A
Protein Pathways:	Lysosome


[View online »](#)

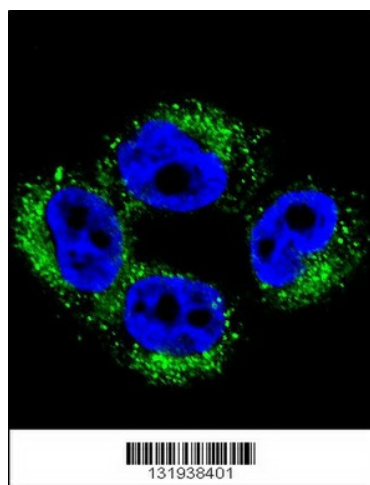
## Product images:



AP1M1 Antibody (Center) (Cat. # [TA324464]) western blot analysis in A375 cell line lysates (35ug/lane). This demonstrates the AP1M1 antibody detected the AP1M1 protein (arrow).



AP1M1 Antibody (Center) (Cat. # [TA324464]) immunohistochemistry analysis in formalin fixed and paraffin embedded human brain tissue followed by peroxidase conjugation of the secondary antibody and DAB staining. This data demonstrates the use of AP1M1 Antibody (Center) for immunohistochemistry. Clinical relevance has not been evaluated.



Confocal immunofluorescent analysis of AP1M1 Antibody (Center) (Cat#[TA324464]) with A375 cell followed by Alexa Fluor 488-conjugated goat anti-rabbit IgG (green). DAPI was used to stain the cell nuclear (blue).