

Product datasheet for **TA324463S**

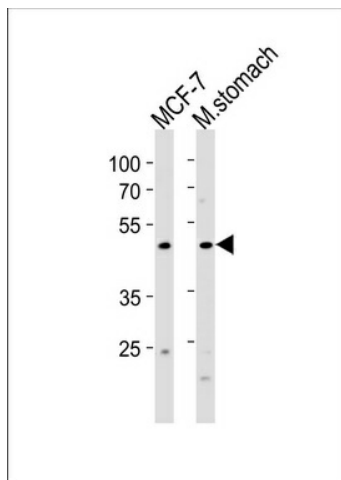
FOXA2 Rabbit Polyclonal Antibody

Product data:

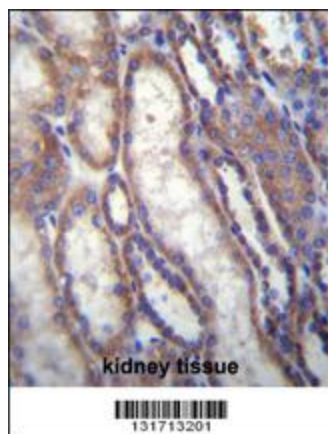
| | |
|-------------------------|---|
| Product Type: | Primary Antibodies |
| Applications: | IF, IHC, WB |
| Recommended Dilution: | WB: 1:1000, IHC: 1:10~50, IF: 1:10~50 |
| Reactivity: | Human, Rat (Predicted: Mouse) |
| Host: | Rabbit |
| Isotype: | IgG |
| Clonality: | Polyclonal |
| Immunogen: | This FOXA2 antibody is generated from rabbits immunized with a KLH conjugated synthetic peptide between 380-407 amino acids from the C-terminal region of human FOXA2. |
| Formulation: | Purified polyclonal antibody supplied in PBS with 0.09% (W/V) sodium azide. |
| Concentration: | lot specific |
| Purification: | This antibody is purified through a protein A column, followed by peptide affinity purification. |
| Conjugation: | Unconjugated |
| Storage: | Store at -20°C as received. |
| Stability: | Stable for 12 months from date of receipt. |
| Predicted Protein Size: | 48306 Da |
| Gene Name: | forkhead box A2 |
| Database Link: | NP_068556 Entrez Gene 15376 Mouse Entrez Gene 25099 Rat Entrez Gene 3170 Human Q9Y261 |
| Synonyms: | HNF3B; TCF3B |
| Protein Families: | Embryonic stem cells, ES Cell Differentiation/IPS, Induced pluripotent stem cells, Transcription Factors |
| Protein Pathways: | Maturity onset diabetes of the young |



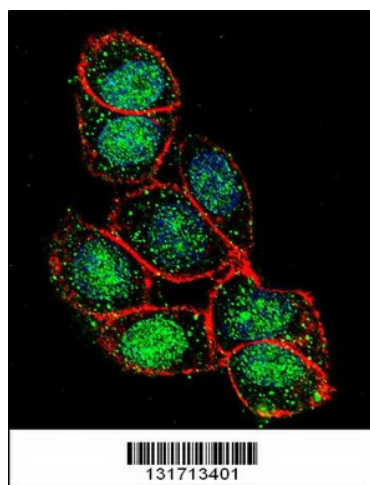
[View online »](#)

Product images:

FOXA2 Antibody (C-term) (Cat. # [TA324463]) western blot analysis in MCF-7 cell line and rat stomach tissue lysates (35ug/lane). This demonstrates the FOXA2 antibody detected the FOXA2 protein (arrow).



FOXA2 Antibody (C-term) (Cat. # [TA324463]) immunohistochemistry analysis in formalin fixed and paraffin embedded human kidney tissue followed by peroxidase conjugation of the secondary antibody and DAB staining. This data demonstrates the use of FOXA2 Antibody (C-term) for immunohistochemistry. Clinical relevance has not been evaluated.



Confocal immunofluorescent analysis of FOXA2 Antibody (C-term) (Cat#[TA324463]) with HeLa cell followed by Alexa Fluor 488-conjugated goat anti-rabbit IgG (green). Actin filaments have been labeled with Alexa Fluor 555 phalloidin (red). DAPI was used to stain the cell nuclear (blue).