

## Product datasheet for **TA324462**

### Dishevelled 3 (DVL3) Rabbit Polyclonal Antibody

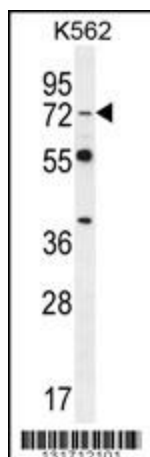
#### Product data:

Product Type:	Primary Antibodies
Applications:	IF, IHC, WB
Recommended Dilution:	WB: 1:1000, IHC: 1:10~50, IF: 1:10~50
Reactivity:	Human (Predicted: Mouse)
Host:	Rabbit
Isotype:	IgG
Clonality:	Polyclonal
Immunogen:	This DVL3 antibody is generated from rabbits immunized with a KLH conjugated synthetic peptide between 530-557 amino acids from the C-terminal region of human DVL3.
Formulation:	Purified polyclonal antibody supplied in PBS with 0.09% (W/V) sodium azide.
Concentration:	lot specific
Purification:	This antibody is purified through a protein A column, followed by peptide affinity purification.
Conjugation:	Unconjugated
Storage:	Store at -20°C as received.
Stability:	Stable for 12 months from date of receipt.
Predicted Protein Size:	78055 Da
Gene Name:	dishevelled segment polarity protein 3
Database Link:	<a href="#">NP_004414</a> <a href="#">Entrez Gene 13544 Mouse</a> <a href="#">Entrez Gene 1857 Human</a> <a href="#">Q92997</a>
Synonyms:	DRS3
Protein Families:	Druggable Genome, ES Cell Differentiation/IPS
Protein Pathways:	Basal cell carcinoma, Colorectal cancer, Melanogenesis, Notch signaling pathway, Pathways in cancer, Wnt signaling pathway

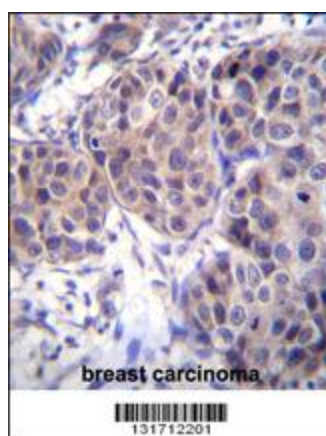


[View online »](#)

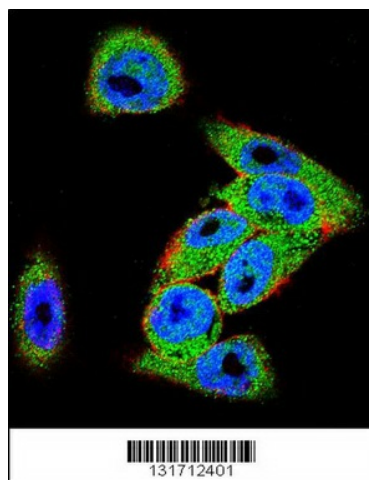
## Product images:



DVL3 Antibody (C-term) (Cat. #TA324462) western blot analysis in K562 cell line lysates (35ug/lane). This demonstrates the DVL3 antibody detected the DVL3 protein (arrow).



DVL3 Antibody (C-term) (Cat. #TA324462) immunohistochemistry analysis in formalin fixed and paraffin embedded human breast carcinoma followed by peroxidase conjugation of the secondary antibody and DAB staining. This data demonstrates the use of DVL3 Antibody (C-term) for immunohistochemistry. Clinical relevance has not been evaluated.



Confocal immunofluorescent analysis of DVL3 Antibody (C-term) (Cat#TA324462) with A375 cell followed by Alexa Fluor 488-conjugated goat anti-rabbit IgG (green). Actin filaments have been labeled with Alexa Fluor 555 phalloidin (red). DAPI was used to stain the cell nuclear (blue).

