

## Product datasheet for **TA324461**

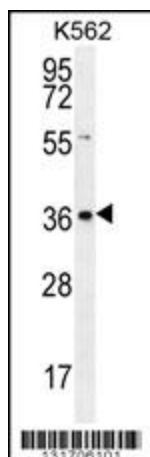
### SLC25A31 Rabbit Polyclonal Antibody

#### Product data:

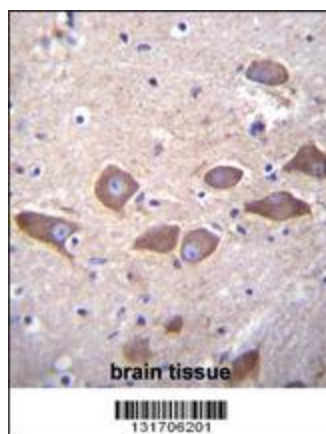
Product Type:	Primary Antibodies
Applications:	IF, IHC, WB
Recommended Dilution:	WB: 1:1000, IHC: 1:10~50, IF: 1:10~50
Reactivity:	Human (Predicted: Monkey)
Host:	Rabbit
Isotype:	IgG
Clonality:	Polyclonal
Immunogen:	This SLC25A31 antibody is generated from rabbits immunized with a KLH conjugated synthetic peptide between 139-167 amino acids from the Central region of human SLC25A31.
Formulation:	Purified polyclonal antibody supplied in PBS with 0.09% (W/V) sodium azide.
Concentration:	lot specific
Purification:	This antibody is purified through a protein A column, followed by peptide affinity purification.
Conjugation:	Unconjugated
Storage:	Store at -20°C as received.
Stability:	Stable for 12 months from date of receipt.
Predicted Protein Size:	35022 Da
Gene Name:	solute carrier family 25 member 31
Database Link:	<a href="#">NP_112581</a> <a href="#">Entrez Gene 710042 Monkey</a> <a href="#">Entrez Gene 83447 Human</a> <a href="#">Q9H0C2</a>
Synonyms:	AAC4; ANT 4; ANT4; SFEC35kDa
Protein Families:	Druggable Genome, Transmembrane
Protein Pathways:	Calcium signaling pathway, Huntington's disease, Parkinson's disease



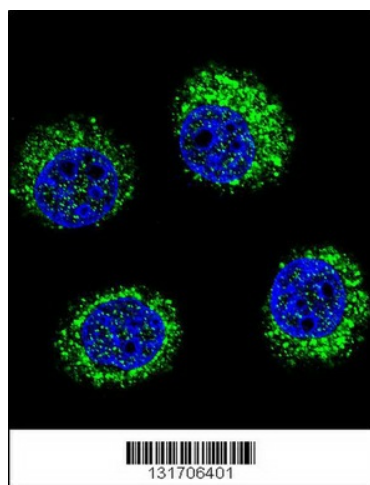
[View online »](#)

**Product images:**

SLC25A31 Antibody (Center) (Cat. #TA324461) western blot analysis in K562 cell line lysates (35ug/lane). This demonstrates the SLC25A31 antibody detected the SLC25A31 protein (arrow).



SLC25A31 Antibody (Center) (Cat. #TA324461) immunohistochemistry analysis in formalin fixed and paraffin embedded human brain tissue followed by peroxidase conjugation of the secondary antibody and DAB staining. This data demonstrates the use of SLC25A31 Antibody (Center) for immunohistochemistry. Clinical relevance has not been evaluated.



Confocal immunofluorescent analysis of SLC25A31 Antibody (Center) (Cat#TA324461) with U-251MG cell followed by Alexa Fluor 488-conjugated goat anti-rabbit IgG (green). DAPI was used to stain the cell nuclear (blue).