

Product datasheet for **TA324460S**

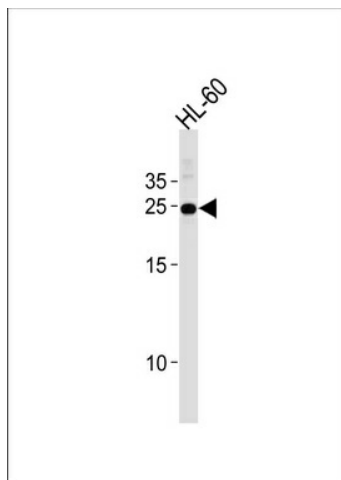
HOXA6 Rabbit Polyclonal Antibody

Product data:

Product Type:	Primary Antibodies
Applications:	WB
Recommended Dilution:	WB: 1:1000
Reactivity:	Human
Host:	Rabbit
Isotype:	IgG
Clonality:	Polyclonal
Immunogen:	This HOXA6 antibody is generated from rabbits immunized with a KLH conjugated synthetic peptide between 105-133 amino acids from the Central region of human HOXA6.
Formulation:	Purified polyclonal antibody supplied in PBS with 0.09% (W/V) sodium azide.
Concentration:	lot specific
Purification:	This antibody is purified through a protein A column, followed by peptide affinity purification.
Conjugation:	Unconjugated
Storage:	Store at -20°C as received.
Stability:	Stable for 12 months from date of receipt.
Predicted Protein Size:	26339 Da
Gene Name:	homeobox A6
Database Link:	NP_076919 Entrez Gene 3203 Human P31267
Synonyms:	HOX1; HOX1.2; HOX1B
Protein Families:	Transcription Factors



[View online »](#)

Product images:

HOXA6 Antibody (Center) (Cat. #[TA324460])
western blot analysis in HL-60 cell line lysates
(35ug/lane). This demonstrates the HOXA6
antibody detected the HOXA6 protein (arrow).