

## Product datasheet for **TA324459**

### Carboxypeptidase B (CPB1) Rabbit Polyclonal Antibody

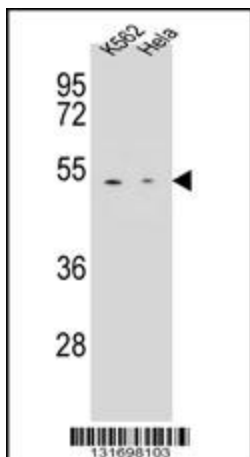
#### Product data:

Product Type:	Primary Antibodies
Applications:	FC, IF, IHC, WB
Recommended Dilution:	IF: 1:10~50, IHC: 1:10~50, WB: 1:1000, FC: 1:10~50
Reactivity:	Human
Host:	Rabbit
Isotype:	IgG
Clonality:	Polyclonal
Immunogen:	This CPB1 antibody is generated from rabbits immunized with a KLH conjugated synthetic peptide between 9-37 amino acids from the N-terminal region of human CPB1.
Formulation:	Purified polyclonal antibody supplied in PBS with 0.09% (W/V) sodium azide.
Concentration:	lot specific
Purification:	This antibody is purified through a protein A column, followed by peptide affinity purification.
Conjugation:	Unconjugated
Storage:	Store at -20°C as received.
Stability:	Stable for 12 months from date of receipt.
Predicted Protein Size:	47368 Da
Gene Name:	carboxypeptidase B1
Database Link:	<a href="#">NP_001862</a> <a href="#">Entrez Gene 1360 Human</a> <a href="#">P15086</a>
Synonyms:	CPB; PASP; PCPB
Protein Families:	Druggable Genome, Protease, Secreted Protein

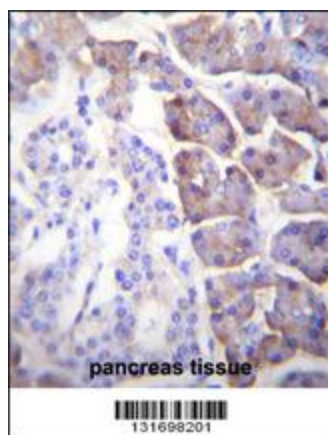


[View online »](#)

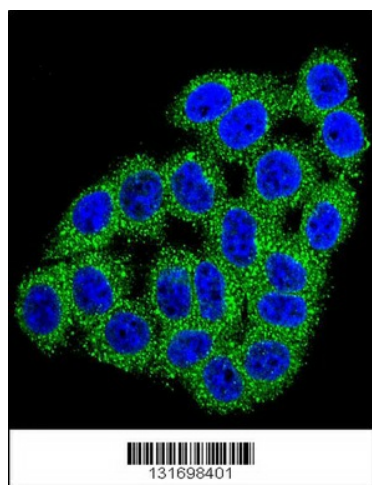
## Product images:



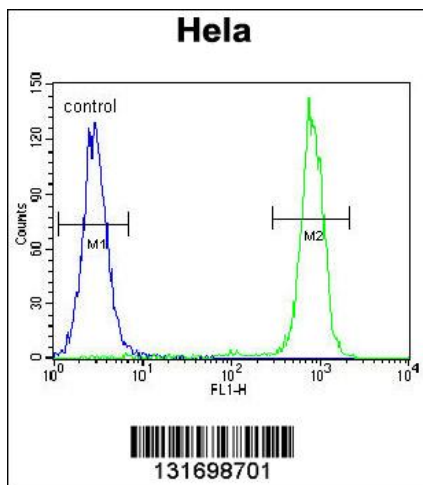
CPB1 Antibody (N-term) (Cat. #TA324459) western blot analysis in K562, HeLa cell line lysates (35ug/lane). This demonstrates the CPB1 antibody detected the CPB1 protein (arrow).



CPB1 Antibody (N-term) (Cat. #TA324459) immunohistochemistry analysis in formalin fixed and paraffin embedded human pancreas tissue followed by peroxidase conjugation of the secondary antibody and DAB staining. This data demonstrates the use of CPB1 Antibody (N-term) for immunohistochemistry. Clinical relevance has not been evaluated.



Confocal immunofluorescent analysis of CPB1 Antibody (N-term) (Cat#TA324459) with HeLa cell followed by Alexa Fluor 488-conjugated goat anti-rabbit IgG (green). DAPI was used to stain the cell nuclear (blue).



CPB1 Antibody (N-term) (Cat. #TA324459) flow cytometric analysis of HeLa cells (right histogram) compared to a negative control cell (left histogram). FITC-conjugated goat-anti-rabbit secondary antibodies were used for the analysis.