

## Product datasheet for **TA324458S**

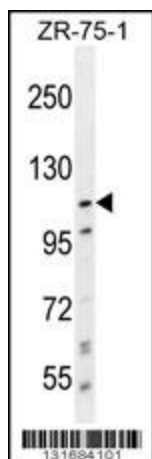
### PCDHA8 Rabbit Polyclonal Antibody

#### Product data:

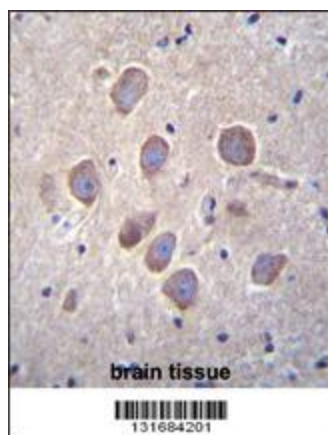
Product Type:	Primary Antibodies
Applications:	IF, IHC, WB
Recommended Dilution:	WB: 1:1000, IHC: 1:10~50, IF: 1:10~50
Reactivity:	Human
Host:	Rabbit
Isotype:	IgG
Clonality:	Polyclonal
Immunogen:	This PCDHA8 antibody is generated from rabbits immunized with a KLH conjugated synthetic peptide between 773-800 amino acids from the C-terminal region of human PCDHA8.
Formulation:	Purified polyclonal antibody supplied in PBS with 0.09% (W/V) sodium azide.
Concentration:	lot specific
Purification:	This antibody is purified through a protein A column, followed by peptide affinity purification.
Conjugation:	Unconjugated
Storage:	Store at -20°C as received.
Stability:	Stable for 12 months from date of receipt.
Predicted Protein Size:	103051 Da
Gene Name:	protocadherin alpha 8
Database Link:	<a href="#">NP_061734</a> <a href="#">Entrez Gene 56140 Human</a> <a href="#">Q9Y5H6</a>
Synonyms:	PCDH-ALPHA8
Protein Families:	Transmembrane


[View online »](#)

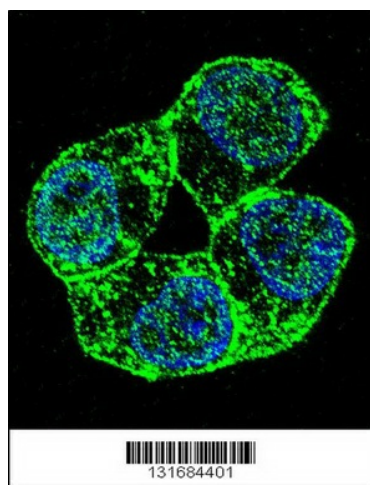
## Product images:



PCDHA8 Antibody (C-term) (Cat. # [TA324458]) western blot analysis in ZR-75-1 cell line lysates (35ug/lane). This demonstrates the PCDHA8 antibody detected the PCDHA8 protein (arrow).



PCDHA8 Antibody (C-term) (Cat. # [TA324458]) immunohistochemistry analysis in formalin fixed and paraffin embedded human brain tissue followed by peroxidase conjugation of the secondary antibody and DAB staining. This data demonstrates the use of PCDHA8 Antibody (C-term) for immunohistochemistry. Clinical relevance has not been evaluated.



Confocal immunofluorescent analysis of PCDHA8 Antibody (C-term) (Cat#[TA324458]) with ZR-75-1 cell followed by Alexa Fluor 488-conjugated goat anti-rabbit IgG (green). DAPI was used to stain the cell nuclear (blue).