

## Product datasheet for **TA324457**

### PCDH1 Rabbit Polyclonal Antibody

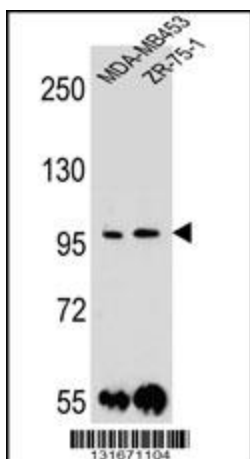
#### Product data:

Product Type:	Primary Antibodies
Applications:	IF, IHC, WB
Recommended Dilution:	IHC: 1:10~50, WB: 1:1000, IF: 1:10~50
Reactivity:	Human
Host:	Rabbit
Isotype:	IgG
Clonality:	Polyclonal
Immunogen:	This PCDH1 antibody is generated from rabbits immunized with a KLH conjugated synthetic peptide between 179-206 amino acids from the N-terminal region of human PCDH1.
Formulation:	Purified polyclonal antibody supplied in PBS with 0.09% (W/V) sodium azide.
Concentration:	lot specific
Purification:	This antibody is purified through a protein A column, followed by peptide affinity purification.
Conjugation:	Unconjugated
Storage:	Store at -20°C as received.
Stability:	Stable for 12 months from date of receipt.
Predicted Protein Size:	114743 Da
Gene Name:	protocadherin 1
Database Link:	<a href="#">NP_115796</a> <a href="#">Entrez Gene 5097 Human</a> <a href="#">Q08174</a>
Synonyms:	PC42; PCDH42
Protein Families:	Transcription Factors, Transmembrane

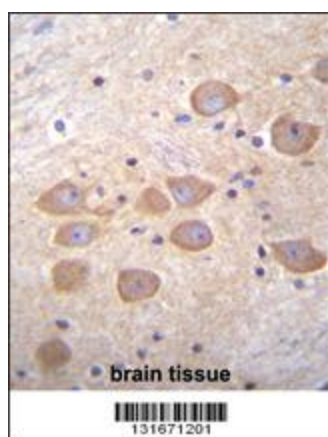


[View online »](#)

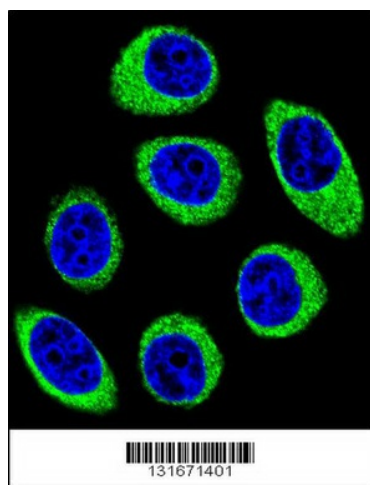
## Product images:



PCDH1 Antibody (N-term) (Cat. #TA324457) western blot analysis in MDA-MB453, ZR-75-1 cell line lysates (35ug/lane). This demonstrates the PCDH1 antibody detected the PCDH1 protein (arrow).



PCDH1 Antibody (N-term) (Cat. #TA324457) immunohistochemistry analysis in formalin fixed and paraffin embedded human brain tissue followed by peroxidase conjugation of the secondary antibody and DAB staining. This data demonstrates the use of PCDH1 Antibody (N-term) for immunohistochemistry. Clinical relevance has not been evaluated.



Confocal immunofluorescent analysis of PCDH1 Antibody (N-term) (Cat#TA324457) with U-251MG cell followed by Alexa Fluor 488-conjugated goat anti-rabbit IgG (green). DAPI was used to stain the cell nuclear (blue).