

## Product datasheet for **TA324455**

### beta Arrestin 1 (ARRB1) Rabbit Polyclonal Antibody

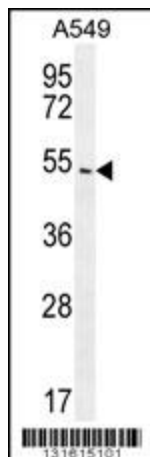
#### Product data:

Product Type:	Primary Antibodies
Applications:	FC, IF, IHC, WB
Recommended Dilution:	WB: 1:1000, IHC: 1:10~50, IF: 1:10~50, FC: 1:10~50
Reactivity:	Human (Predicted: Mouse, Rat, Bovine, Rabbit)
Host:	Rabbit
Isotype:	IgG
Clonality:	Polyclonal
Immunogen:	This ARRB1 antibody is generated from rabbits immunized with a KLH conjugated synthetic peptide between 336-363 amino acids from the C-terminal region of human ARRB1.
Formulation:	Purified polyclonal antibody supplied in PBS with 0.09% (W/V) sodium azide.
Concentration:	lot specific
Purification:	This antibody is purified through a protein A column, followed by peptide affinity purification.
Conjugation:	Unconjugated
Storage:	Store at -20°C as received.
Stability:	Stable for 12 months from date of receipt.
Predicted Protein Size:	47066 Da
Gene Name:	arrestin beta 1
Database Link:	<a href="#">NP_004032</a> <a href="#">Entrez Gene 25387 Rat</a> <a href="#">Entrez Gene 109689 Mouse</a> <a href="#">Entrez Gene 408 Human</a> <a href="#">P49407</a>
Synonyms:	ARB1; ARR1
Protein Families:	Druggable Genome
Protein Pathways:	Chemokine signaling pathway, Endocytosis, MAPK signaling pathway

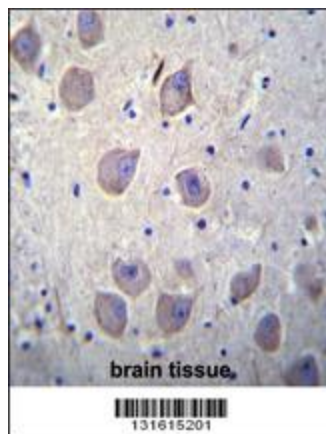


[View online »](#)

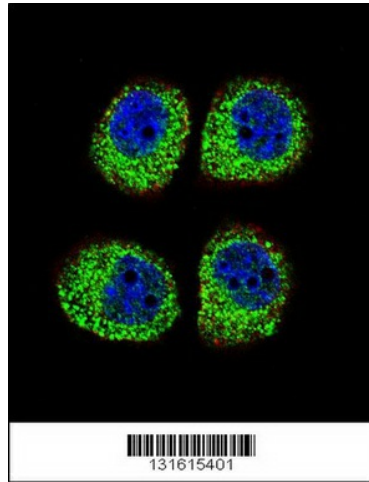
## Product images:



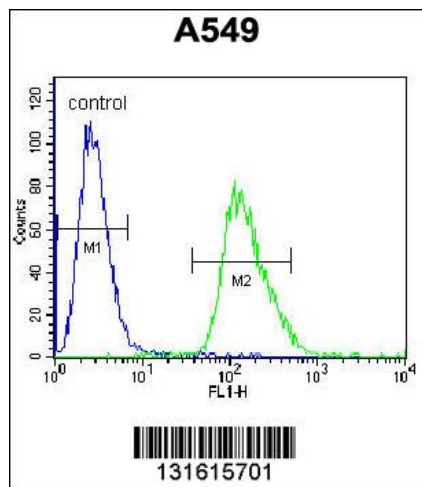
ARRB1 Antibody (C-term) (Cat. #TA324455) western blot analysis in A549 cell line lysates (35ug/lane). This demonstrates the ARRB1 antibody detected the ARRB1 protein (arrow).



ARRB1 Antibody (C-term) (Cat. #TA324455) immunohistochemistry analysis in formalin fixed and paraffin embedded human brain tissue followed by peroxidase conjugation of the secondary antibody and DAB staining. This data demonstrates the use of ARRB1 Antibody (C-term) for immunohistochemistry. Clinical relevance has not been evaluated.



Confocal immunofluorescent analysis of ARRB1 Antibody (C-term) (Cat#TA324455) with A549 cell followed by Alexa Fluor 488-conjugated goat anti-rabbit IgG (green). Actin filaments have been labeled with Alexa Fluor 555 phalloidin (red). DAPI was used to stain the cell nuclear (blue).



ARRB1 Antibody (C-term) (Cat. #TA324455) flow cytometric analysis of A549 cells (right histogram) compared to a negative control cell (left histogram). FITC-conjugated goat-anti-rabbit secondary antibodies were used for the analysis.