

## Product datasheet for **TA324453S**

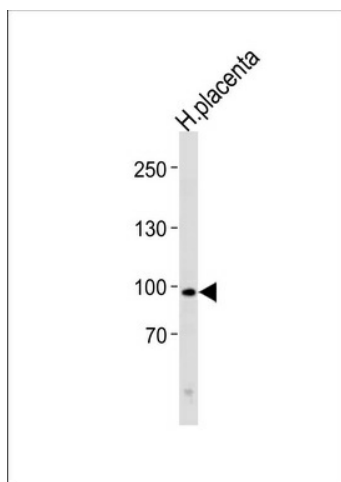
### Ku80 (XRCC5) Rabbit Polyclonal Antibody

#### Product data:

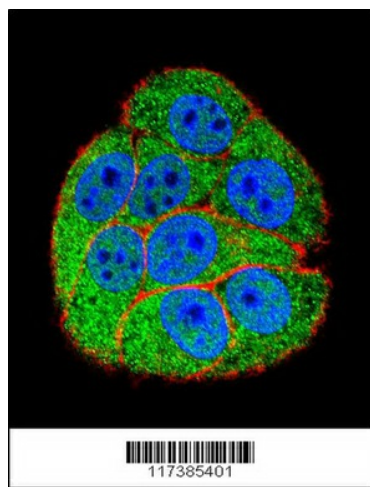
Product Type:	Primary Antibodies
Applications:	FC, IF, WB
Recommended Dilution:	WB: 1:1000, IF: 1:10~50, FC: 1:10~50
Reactivity:	Human
Host:	Rabbit
Isotype:	IgG
Clonality:	Polyclonal
Immunogen:	This XRCC5 antibody is generated from rabbits immunized with a KLH conjugated synthetic peptide between 424-450 amino acids from the Central region of human XRCC5.
Formulation:	Purified polyclonal antibody supplied in PBS with 0.09% (W/V) sodium azide.
Concentration:	lot specific
Purification:	This antibody is purified through a protein A column, followed by peptide affinity purification.
Conjugation:	Unconjugated
Storage:	Store at -20°C as received.
Stability:	Stable for 12 months from date of receipt.
Predicted Protein Size:	82705 Da
Gene Name:	X-ray repair complementing defective repair in Chinese hamster cells 5
Database Link:	<a href="#">NP_066964</a> <a href="#">Entrez Gene 7520 Human</a> <a href="#">P13010</a>
Synonyms:	KARP-1; KARP1; KU80; Ku86; KUB2; NFIV
Protein Families:	Druggable Genome, Stem cell - Pluripotency
Protein Pathways:	Non-homologous end-joining


[View online »](#)

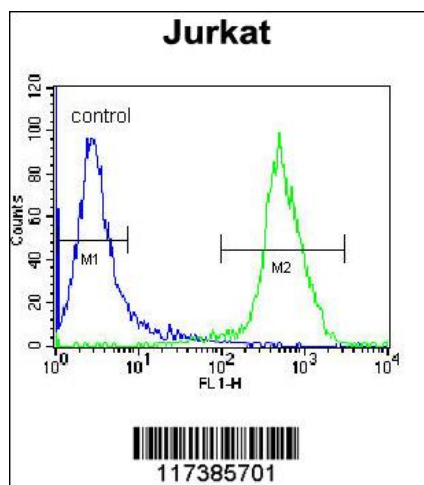
## Product images:



XRCC5 Antibody (CenterK439) (Cat. #TA324453) western blot analysis in human placenta tissue lysates (35ug/lane). This demonstrates the XRCC5 antibody detected the XRCC5 protein (arrow).



Confocal immunofluorescent analysis of XRCC5 Antibody (Center K439) (Cat#TA324453) with hela cell followed by Alexa Fluor 488-conjugated goat anti-rabbit IgG (green). Actin filaments have been labeled with Alexa Fluor 555 phalloidin (red). DAPI was used to stain the cell nuclear (blue).



XRCC5 Antibody (Center K439) (Cat. #[TA324453]) flow cytometric analysis of Jurkat cells (right histogram) compared to a negative control cell (left histogram). FITC-conjugated donkey-anti-rabbit secondary antibodies were used for the analysis.