

## Product datasheet for **TA324451S**

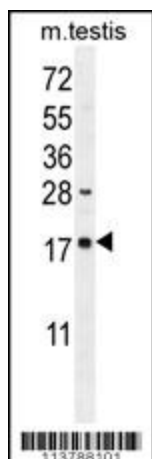
### DDIT3 Rabbit Polyclonal Antibody

#### Product data:

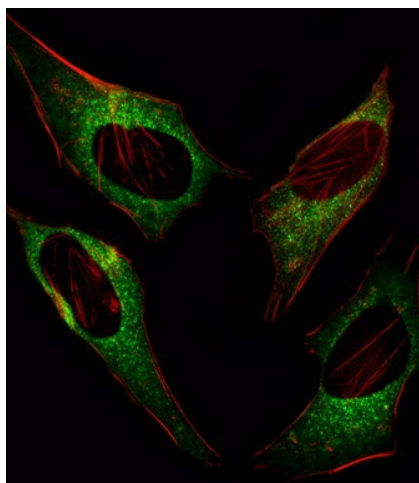
Product Type:	Primary Antibodies
Applications:	FC, IF, WB
Recommended Dilution:	IF: 1:10~50, WB: 1:1000, FC: 1:10~50
Reactivity:	Mouse (Predicted: Bovine, Hamster)
Host:	Rabbit
Isotype:	IgG
Clonality:	Polyclonal
Immunogen:	This DDIT3 antibody is generated from rabbits immunized with a KLH conjugated synthetic peptide between 120-149 amino acids from the C-terminal region of human DDIT3.
Formulation:	Purified polyclonal antibody supplied in PBS with 0.09% (W/V) sodium azide.
Concentration:	lot specific
Purification:	This antibody is purified through a protein A column, followed by peptide affinity purification.
Conjugation:	Unconjugated
Storage:	Store at -20°C as received.
Stability:	Stable for 12 months from date of receipt.
Predicted Protein Size:	19175 Da
Gene Name:	DNA damage inducible transcript 3
Database Link:	<a href="#">NP_001181982</a> <a href="#">Entrez Gene 13198 Mouse</a> <a href="#">P35638</a>
Synonyms:	CEBPZ; CHOP; CHOP-10; CHOP10; GADD153
Protein Families:	Druggable Genome, Transcription Factors
Protein Pathways:	MAPK signaling pathway

[View online »](#)

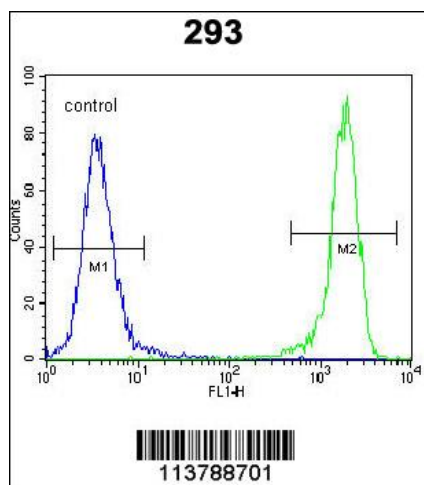
## Product images:



DDIT3 Antibody (C-term A135) (Cat. #TA324451) western blot analysis in mouse testis tissue lysates (35ug/lane). This demonstrates the DDIT3 antibody detected the DDIT3 protein (arrow).



IF image of HeLa cell stained with DDIT3 Antibody (C-term A135) (Cat# [TA324451]/SA101207AA). HeLa cells were incubated with DDIT3 primary antibody (1:25, 1 h at 37°C). For secondary antibody, Alexa Fluor® 488 conjugated donkey anti-rabbit antibody (green) was used (1:400). Cytoplasmic actin was counterstained with Alexa Fluor® 555 (red) conjugated Phalloidin (7 units/ml). DDIT3 immunoreactivity is localized to Cytoplasm significantly.



DDIT3 Antibody (C-term A135) (Cat. #[TA324451]) flow cytometric analysis of 293 cells (right histogram) compared to a negative control cell (left histogram). FITC-conjugated goat-anti-rabbit secondary antibodies were used for the analysis.