

Product datasheet for **TA324450S**

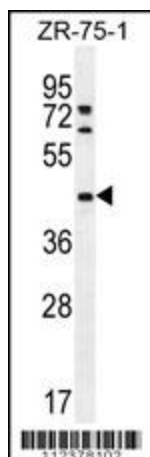
METTL2A Rabbit Polyclonal Antibody

Product data:

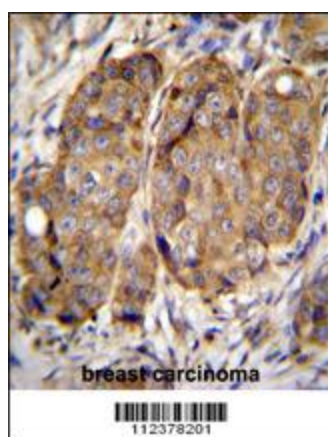
Product Type:	Primary Antibodies
Applications:	IF, IHC, WB
Recommended Dilution:	WB: 1:1000, IHC: 1:50~100, IF: 1:10~50
Reactivity:	Human (Predicted: Mouse, Zebrafish, Bovine)
Host:	Rabbit
Isotype:	IgG
Clonality:	Polyclonal
Immunogen:	This METTL2 antibody is generated from rabbits immunized with a KLH conjugated synthetic peptide between 329-359 amino acids from the C-terminal region of human METTL2.
Formulation:	Purified polyclonal antibody supplied in PBS with 0.09% (W/V) sodium azide.
Concentration:	lot specific
Purification:	This antibody is purified through a protein A column, followed by peptide affinity purification.
Conjugation:	Unconjugated
Storage:	Store at -20°C as received.
Stability:	Stable for 12 months from date of receipt.
Predicted Protein Size:	43537 Da
Gene Name:	methyltransferase like 2A
Database Link:	NP_859076 Entrez Gene 339175 Human Q96IZ6
Synonyms:	METTL2
Protein Families:	Druggable Genome



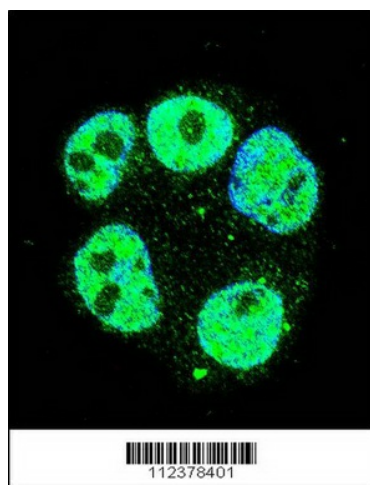
[View online »](#)

Product images:

METTL2 Antibody (C-term) (Cat. # [TA324450]) western blot analysis in ZR-75-1 cell line lysates (35ug/lane). This demonstrates the METTL2 antibody detected the METTL2 protein (arrow).



METTL2 Antibody (C-term) (Cat. # [TA324450]) immunohistochemistry analysis in formalin fixed and paraffin embedded human breast carcinoma followed by peroxidase conjugation of the secondary antibody and DAB staining. This data demonstrates the use of METTL2 Antibody (C-term) for immunohistochemistry. Clinical relevance has not been evaluated.



Confocal immunofluorescent analysis of METTL2 Antibody (C-term) (Cat#[TA324450]) with ZR-75-1 cell followed by Alexa Fluor 488-conjugated goat anti-rabbit IgG (green). DAPI was used to stain the cell nuclear (blue).