

## Product datasheet for **TA324449S**

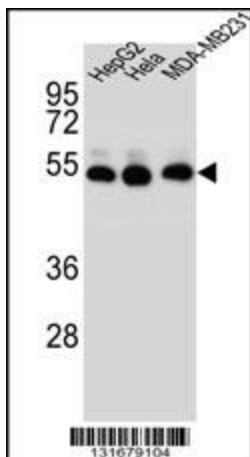
### TUBB2B Rabbit Polyclonal Antibody

#### Product data:

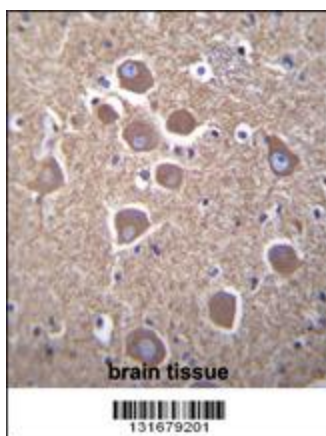
Product Type:	Primary Antibodies
Applications:	IF, IHC, WB
Recommended Dilution:	IF: 1:10~50, WB: 1:1000, IHC: 1:10~50
Reactivity:	Human (Predicted: Mouse, Rat, Bovine, Chicken, Pig, Monkey, Xenopus)
Host:	Rabbit
Isotype:	IgG
Clonality:	Polyclonal
Immunogen:	This TUBB2B antibody is generated from rabbits immunized with a KLH conjugated synthetic peptide between 12-39 amino acids from the N-terminal region of human TUBB2B.
Formulation:	Purified polyclonal antibody supplied in PBS with 0.09% (W/V) sodium azide.
Concentration:	lot specific
Purification:	This antibody is purified through a protein A column, followed by peptide affinity purification.
Conjugation:	Unconjugated
Storage:	Store at -20°C as received.
Stability:	Stable for 12 months from date of receipt.
Predicted Protein Size:	49953 Da
Gene Name:	tubulin beta 2B class IIb
Database Link:	<a href="#">NP_821080</a> <a href="#">Entrez Gene 73710 Mouse</a> <a href="#">Entrez Gene 291081 Rat</a> <a href="#">Entrez Gene 708415 Monkey</a> <a href="#">Entrez Gene 347733 Human</a> <a href="#">Q9BVA1</a>
Synonyms:	bA506K6.1; PMGYSA
Protein Families:	Druggable Genome
Protein Pathways:	Gap junction, Pathogenic Escherichia coli infection



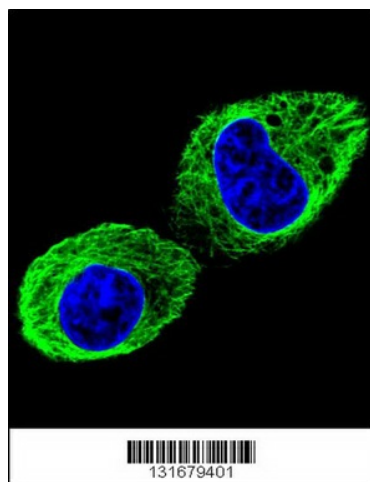
[View online »](#)

**Product images:**


TUBB2B Antibody (N-term) (Cat. # [TA324449]) western blot analysis in HepG2, Hela, MDA-MB231 cell line lysates (35ug/lane). This demonstrates the TUBB2B antibody detected the TUBB2B protein (arrow).



TUBB2B Antibody (N-term) (Cat. # [TA324449]) immunohistochemistry analysis in formalin fixed and paraffin embedded human brain tissue followed by peroxidase conjugation of the secondary antibody and DAB staining. This data demonstrates the use of TUBB2B Antibody (N-term) for immunohistochemistry. Clinical relevance has not been evaluated.



Confocal immunofluorescent analysis of TUBB2B Antibody (N-term) (Cat# [TA324449]) with HepG2 cell followed by Alexa Fluor 488-conjugated goat anti-rabbit IgG (green). DAPI was used to stain the cell nuclear (blue).

