

Product datasheet for **TA324448S**

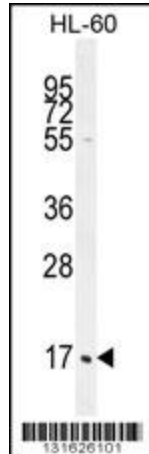
C1QC Rabbit Polyclonal Antibody

Product data:

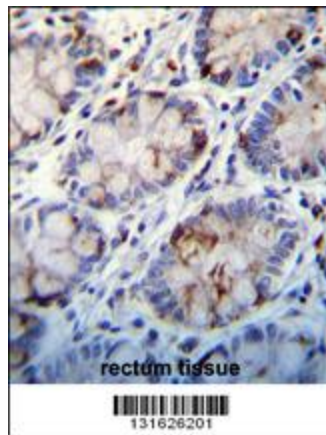
| | |
|-------------------------|--|
| Product Type: | Primary Antibodies |
| Applications: | FC, IF, IHC, WB |
| Recommended Dilution: | WB: 1:1000, IHC: 1:10~50, FC: 1:10~50, IF: 1:10~50 |
| Reactivity: | Human |
| Host: | Rabbit |
| Isotype: | IgG |
| Clonality: | Polyclonal |
| Immunogen: | This C1QC antibody is generated from rabbits immunized with a KLH conjugated synthetic peptide between 93-120 amino acids from the Central region of human C1QC. |
| Formulation: | Purified polyclonal antibody supplied in PBS with 0.09% (W/V) sodium azide. |
| Concentration: | lot specific |
| Purification: | This antibody is purified through a protein A column, followed by peptide affinity purification. |
| Conjugation: | Unconjugated |
| Storage: | Store at -20°C as received. |
| Stability: | Stable for 12 months from date of receipt. |
| Predicted Protein Size: | 25774 Da |
| Gene Name: | complement component 1, q subcomponent, C chain |
| Database Link: | NP_001107573 Entrez Gene 714 Human P02747 |
| Synonyms: | C1Q-C; C1QG |
| Protein Families: | Secreted Protein |
| Protein Pathways: | Complement and coagulation cascades, Prion diseases, Systemic lupus erythematosus |



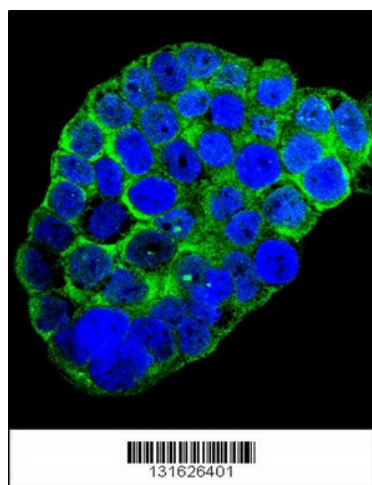
[View online »](#)

Product images:

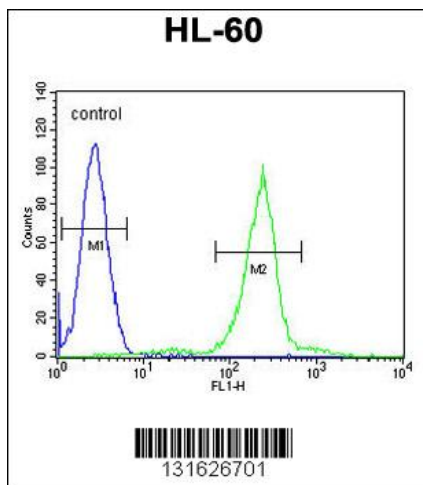
C1QC Antibody (Center) (Cat. # [TA324448]) western blot analysis in HL-60 cell line lysates (35ug/lane). This demonstrates the C1QC antibody detected the C1QC protein (arrow).



C1QC Antibody (Center) (Cat. # [TA324448]) immunohistochemistry analysis in formalin fixed and paraffin embedded human rectum tissue followed by peroxidase conjugation of the secondary antibody and DAB staining. This data demonstrates the use of C1QC Antibody (Center) for immunohistochemistry. Clinical relevance has not been evaluated.



Confocal immunofluorescent analysis of C1QC Antibody (Center) (Cat#[TA324448]) with WiDr cell followed by Alexa Fluor? 488-conjugated goat anti-rabbit IgG (green). DAPI was used to stain the cell nuclear (blue).



C1QC Antibody (Center) (Cat. #[TA324448]) flow cytometric analysis of HL-60 cells (right histogram) compared to a negative control cell (left histogram). FITC-conjugated goat-anti-rabbit secondary antibodies were used for the analysis.