

## Product datasheet for **TA324447**

### GRP94 (HSP90B1) Rabbit Polyclonal Antibody

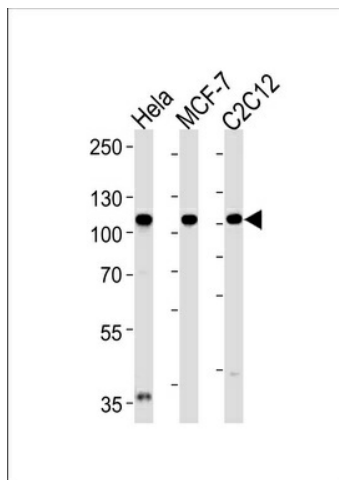
#### Product data:

Product Type:	Primary Antibodies
Applications:	FC, IHC, WB
Recommended Dilution:	WB: 1:1000, IHC: 1:10~50, FC: 1:10~50
Reactivity:	Human (Predicted: Monkey)
Host:	Rabbit
Isotype:	IgG
Clonality:	Polyclonal
Immunogen:	This HSP90B1 antibody is generated from rabbits immunized with a KLH conjugated synthetic peptide between 460-487 amino acids from the Central region of human HSP90B1.
Formulation:	Purified polyclonal antibody supplied in PBS with 0.09% (W/V) sodium azide.
Concentration:	lot specific
Purification:	This antibody is purified through a protein A column, followed by peptide affinity purification.
Conjugation:	Unconjugated
Storage:	Store at -20°C as received.
Stability:	Stable for 12 months from date of receipt.
Predicted Protein Size:	92469 Da
Gene Name:	heat shock protein 90kDa beta family member 1
Database Link:	<a href="#">NP_003290</a> <a href="#">Entrez Gene 699568 Monkey</a> <a href="#">Entrez Gene 7184 Human</a> <a href="#">P14625</a>
Synonyms:	ECGP; GP96; GRP94; HEL-S-125m; HEL35; TRA1
Protein Families:	Druggable Genome
Protein Pathways:	NOD-like receptor signaling pathway, Pathways in cancer, Prostate cancer

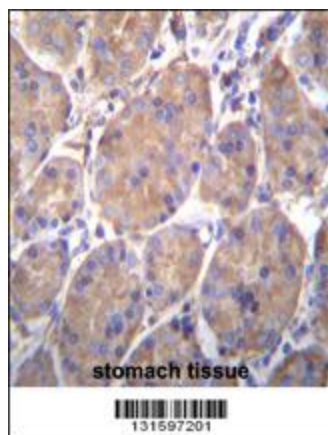


[View online »](#)

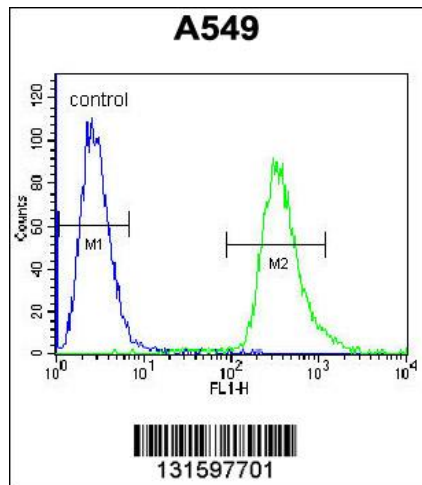
## Product images:



HSP90B1 Antibody (Center) (Cat.# TA324447) western blot analysis in HeLa, MCF-7, mouse C2C12 cell line lysates (35ug/lane). This demonstrates the HSP90B1 antibody detected the HSP90B1 protein (arrow).



HSP90B1 Antibody (Center) (Cat.#TA324447) immunohistochemistry analysis in formalin fixed and paraffin embedded human stomach tissue followed by peroxidase conjugation of the secondary antibody and DAB staining. This data demonstrates the use of HSP90B1 Antibody (Center) for immunohistochemistry. Clinical relevance has not been evaluated.



HSP90B1 Antibody (Center) (Cat. #TA324447) flow cytometric analysis of A549 cells (right histogram) compared to a negative control cell (left histogram). FITC-conjugated goat-anti-rabbit secondary antibodies were used for the analysis.