

Product datasheet for **TA324446**

DCAF8L2 Rabbit Polyclonal Antibody

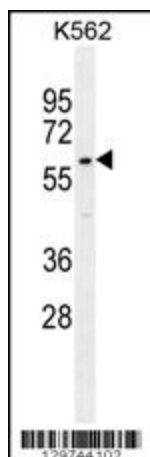
Product data:

Product Type:	Primary Antibodies
Applications:	IF, IHC, WB
Recommended Dilution:	WB: 1:1000, IHC: 1:10~50, IF: 1:10~50
Reactivity:	Human
Host:	Rabbit
Isotype:	IgG
Clonality:	Polyclonal
Immunogen:	This WDR42C antibody is generated from rabbits immunized with a KLH conjugated synthetic peptide between 112-140 amino acids from the N-terminal region of human WDR42C.
Formulation:	Purified polyclonal antibody supplied in PBS with 0.09% (W/V) sodium azide.
Concentration:	lot specific
Purification:	This antibody is purified through a protein A column, followed by peptide affinity purification.
Conjugation:	Unconjugated
Storage:	Store at -20°C as received.
Stability:	Stable for 12 months from date of receipt.
Predicted Protein Size:	71191 Da
Gene Name:	DDB1 and CUL4 associated factor 8-like 2
Database Link:	NP_001130005 Entrez Gene 347442 Human
Synonyms:	WDR42C

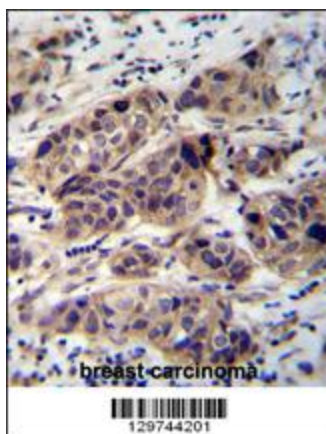


[View online »](#)

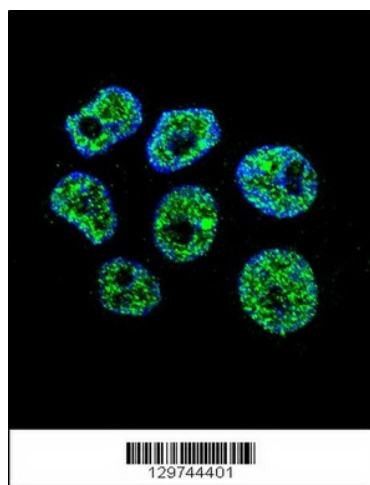
Product images:



WDR42C Antibody (N-term) (Cat. #TA324446) western blot analysis in K562 cell line lysates (35ug/lane). This demonstrates the WDR42C antibody detected the WDR42C protein (arrow).



WDR42C Antibody (N-term) (Cat. #TA324446) immunohistochemistry analysis in formalin fixed and paraffin embedded human breast carcinoma followed by peroxidase conjugation of the secondary antibody and DAB staining. This data demonstrates the use of WDR42C Antibody (N-term) for immunohistochemistry. Clinical relevance has not been evaluated.



Confocal immunofluorescent analysis of WDR42C Antibody (N-term) (Cat#TA324446) with ZR-75-1 cell followed by Alexa Fluor 488-conjugated goat anti-rabbit IgG (green). DAPI was used to stain the cell nuclear (blue).