

## Product datasheet for **TA324445**

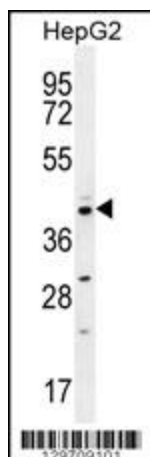
### CCNI2 Rabbit Polyclonal Antibody

#### Product data:

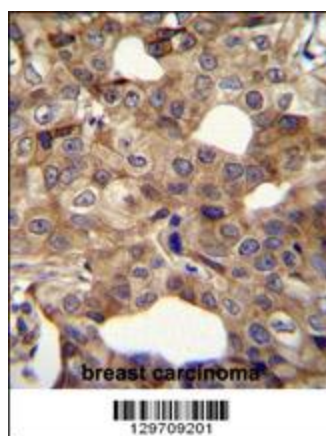
Product Type:	Primary Antibodies
Applications:	IF, IHC, WB
Recommended Dilution:	WB: 1:1000, IHC: 1:10~50, IF: 1:10~50
Reactivity:	Human
Host:	Rabbit
Isotype:	IgG
Clonality:	Polyclonal
Immunogen:	This CCNI2 antibody is generated from rabbits immunized with a KLH conjugated synthetic peptide between 92-121 amino acids from the Central region of human CCNI2.
Formulation:	Purified polyclonal antibody supplied in PBS with 0.09% (W/V) sodium azide.
Concentration:	lot specific
Purification:	This antibody is purified through a protein A column, followed by peptide affinity purification.
Conjugation:	Unconjugated
Storage:	Store at -20°C as received.
Stability:	Stable for 12 months from date of receipt.
Predicted Protein Size:	40622 Da
Gene Name:	cyclin I family member 2
Database Link:	<a href="#">NP_001034869</a> <a href="#">Entrez Gene 645121 Human</a> <a href="#">Q6ZMN8</a>
Synonyms:	FLJ16793



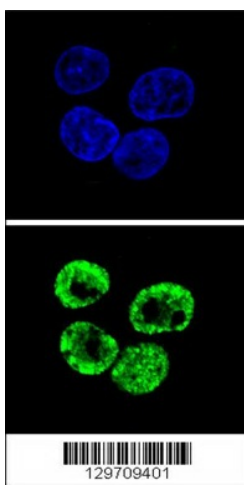
[View online »](#)

**Product images:**

CCNI2 Antibody (Center) (Cat. #TA324445) western blot analysis in HepG2 cell line lysates (35ug/lane). This demonstrates the CCNI2 antibody detected the CCNI2 protein (arrow).



CCNI2 Antibody (Center) (Cat. #TA324445) immunohistochemistry analysis in formalin fixed and paraffin embedded human breast carcinoma followed by peroxidase conjugation of the secondary antibody and DAB staining. This data demonstrates the use of CCNI2 Antibody (Center) for immunohistochemistry. Clinical relevance has not been evaluated.



Confocal immunofluorescent analysis of CCNI2 Antibody (Center) (Cat#TA324445) with HepG2 cell followed by Alexa Fluor 488-conjugated goat anti-rabbit IgG (green). DAPI was used to stain the cell nuclear (blue).