

Product datasheet for **TA324444**

TBC1D13 Rabbit Polyclonal Antibody

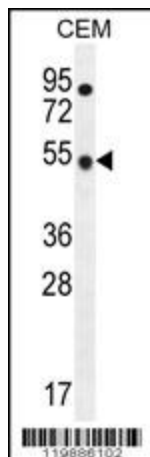
Product data:

Product Type:	Primary Antibodies
Applications:	IF, IHC, WB
Recommended Dilution:	WB: 1:1000, IHC: 1:50~100, IF: 1:10~50
Reactivity:	Human, Mouse
Host:	Rabbit
Isotype:	IgG
Clonality:	Polyclonal
Immunogen:	This TBC1D13 antibody is generated from rabbits immunized with a KLH conjugated synthetic peptide between 76-105 amino acids from the Central region of human TBC1D13.
Formulation:	Purified polyclonal antibody supplied in PBS with 0.09% (W/V) sodium azide.
Concentration:	lot specific
Purification:	This antibody is purified through a protein A column, followed by peptide affinity purification.
Conjugation:	Unconjugated
Storage:	Store at -20°C as received.
Stability:	Stable for 12 months from date of receipt.
Predicted Protein Size:	46554 Da
Gene Name:	TBC1 domain family member 13
Database Link:	NP_060671 Entrez Gene 70296 Mouse Entrez Gene 54662 Human Q9NVG8
Synonyms:	RP11-545E17.5

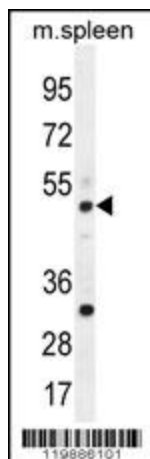


[View online »](#)

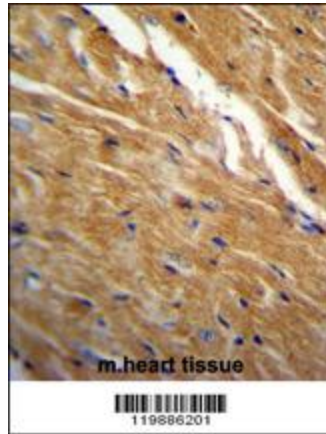
Product images:



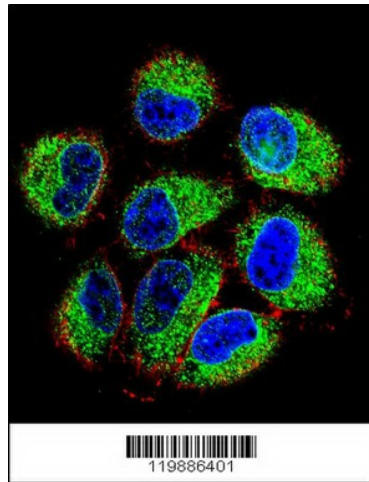
TBC1D13 Antibody (Center) (Cat. #TA324444) western blot analysis in CEM cell line lysates (35ug/lane). This demonstrates the TBC1D13 antibody detected the TBC1D13 protein (arrow).



TBC1D13 Antibody (Center) (Cat. #TA324444) western blot analysis in mouse spleen tissue lysates (35ug/lane). This demonstrates the TBC1D13 antibody detected the TBC1D13 protein (arrow).



TBC1D13 Antibody (Center) (Cat. #TA324444) immunohistochemistry analysis in formalin fixed and paraffin embedded mouse heart tissue followed by peroxidase conjugation of the secondary antibody and DAB staining. This data demonstrates the use of TBC1D13 Antibody (Center) for immunohistochemistry. Clinical relevance has not been evaluated.



Confocal immunofluorescent analysis of TBC1D13 Antibody (Center) (Cat#TA324444) with NCI-H460 cell followed by Alexa Fluor 488-conjugated goat anti-rabbit IgG (green). Actin filaments have been labeled with Alexa Fluor 555 phalloidin (red). DAPI was used to stain the cell nuclear (blue).