

Product datasheet for **TA324443S**

MMP1 Rabbit Polyclonal Antibody

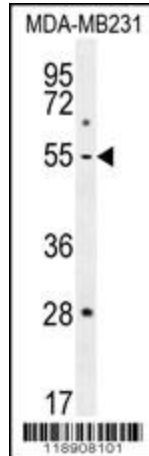
Product data:

Product Type:	Primary Antibodies
Applications:	IF, IHC, WB
Recommended Dilution:	WB: 1:1000, IHC: 1:50~100, IF: 1:10~50
Reactivity:	Human
Host:	Rabbit
Isotype:	IgG
Clonality:	Polyclonal
Immunogen:	This MMP1 antibody is generated from rabbits immunized with a KLH conjugated synthetic peptide between 317-347 amino acids from the Central region of human MMP1.
Formulation:	Purified polyclonal antibody supplied in PBS with 0.09% (W/V) sodium azide.
Concentration:	lot specific
Purification:	This antibody is purified through a protein A column, followed by peptide affinity purification.
Conjugation:	Unconjugated
Storage:	Store at -20°C as received.
Stability:	Stable for 12 months from date of receipt.
Predicted Protein Size:	54007 Da
Gene Name:	matrix metalloproteinase 1
Database Link:	NP_002412 Entrez Gene 4312 Human P03956
Synonyms:	CLG; CLGN
Protein Families:	Druggable Genome, Protease, Secreted Protein
Protein Pathways:	Bladder cancer, Pathways in cancer, PPAR signaling pathway

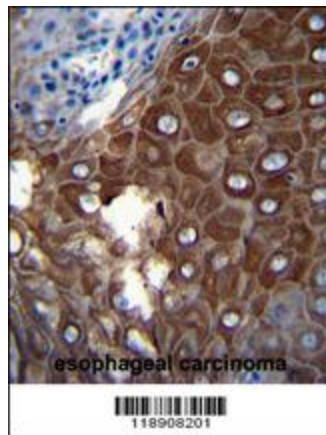


[View online »](#)

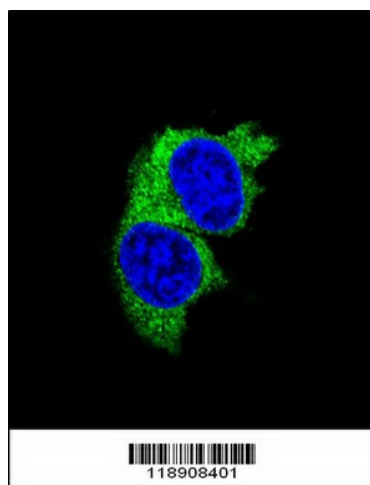
Product images:



MMP1 Antibody (Center) (Cat. # [TA324443]) western blot analysis in MDA-MB231 cell line lysates (35ug/lane). This demonstrates the MMP1 antibody detected the MMP1 protein (arrow).



MMP1 Antibody (Center) (Cat. # [TA324443]) immunohistochemistry analysis in formalin fixed and paraffin embedded human esophageal carcinoma followed by peroxidase conjugation of the secondary antibody and DAB staining. This data demonstrates the use of MMP1 Antibody (Center) for immunohistochemistry. Clinical relevance has not been evaluated.



Confocal immunofluorescent analysis of MMP1 Antibody (Center) (Cat#[TA324443]) with MDA-MB231 cell followed by Alexa Fluor 488-conjugated goat anti-rabbit IgG (green). DAPI was used to stain the cell nuclear (blue).