

## Product datasheet for **TA324442**

### **KAP1 (TRIM28) Rabbit Polyclonal Antibody**

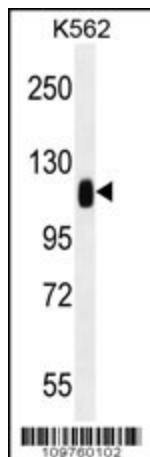
#### **Product data:**

<b>Product Type:</b>	Primary Antibodies
<b>Applications:</b>	IF, IHC, WB
<b>Recommended Dilution:</b>	WB: 1:1000, IHC: 1:50~100, IF: 1:10~50
<b>Reactivity:</b>	Human
<b>Host:</b>	Rabbit
<b>Isotype:</b>	IgG
<b>Clonality:</b>	Polyclonal
<b>Immunogen:</b>	This TRIM28 antibody is generated from rabbits immunized with a KLH conjugated synthetic peptide between 178-207 amino acids from the N-terminal region of human TRIM28.
<b>Formulation:</b>	Purified polyclonal antibody supplied in PBS with 0.09% (W/V) sodium azide.
<b>Concentration:</b>	lot specific
<b>Purification:</b>	This antibody is purified through a protein A column, followed by peptide affinity purification.
<b>Conjugation:</b>	Unconjugated
<b>Storage:</b>	Store at -20°C as received.
<b>Stability:</b>	Stable for 12 months from date of receipt.
<b>Predicted Protein Size:</b>	88550 Da
<b>Gene Name:</b>	tripartite motif containing 28
<b>Database Link:</b>	<a href="#">NP_005753</a> <a href="#">Entrez Gene 10155 Human</a> <a href="#">Q13263</a>
<b>Synonyms:</b>	KAP1; PPP1R157; RNF96; TF1B; TIF1B
<b>Protein Families:</b>	Protein Kinase, Stem cell - Pluripotency, Transcription Factors

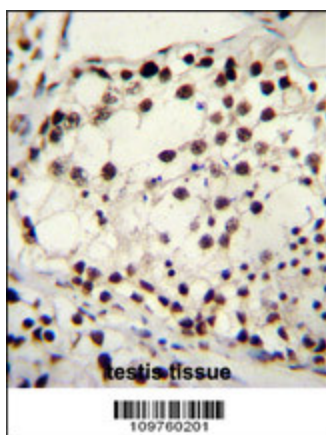


[View online »](#)

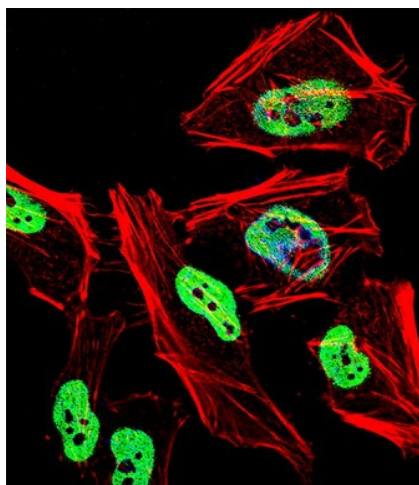
## Product images:



TRIM28 Antibody (N-term) (Cat. #TA324442) western blot analysis in K562 cell line lysates (35ug/lane). This demonstrates the TRIM28 antibody detected the TRIM28 protein (arrow).



TRIM28 Antibody (N-term) (Cat. #TA324442) immunohistochemistry analysis in formalin fixed and paraffin embedded human testis tissue followed by peroxidase conjugation of the secondary antibody and DAB staining. This data demonstrates the use of TRIM28 Antibody (N-term) for immunohistochemistry. Clinical relevance has not been evaluated.



IF image of HeLa cell stained with TRIM28 Antibody (N-term) (Cat#RB09760). HeLa cells were incubated with TRIM28 primary antibody (1:25, 1 h at 37°C). For secondary antibody, Alexa Fluor® 488 conjugated donkey anti-rabbit antibody (1:400). Cytoplasmic actin was counterstained with Alexa Fluor® 555 (red) conjugated Phalloidin (7 units/ml). Nuclei were counterstained with DAPI (blue). TRIM28 immunoreactivity is localized to Nucleus significantly.