

## Product datasheet for **TA324440**

### COL8A2 Rabbit Polyclonal Antibody

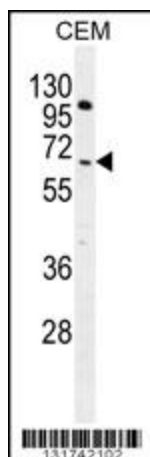
#### Product data:

Product Type:	Primary Antibodies
Applications:	IF, IHC, WB
Recommended Dilution:	WB: 1:1000, IHC: 1:10~50, IF: 1:10~50
Reactivity:	Human
Host:	Rabbit
Isotype:	IgG
Clonality:	Polyclonal
Immunogen:	This COL8A2 antibody is generated from rabbits immunized with a KLH conjugated synthetic peptide between 571-599 amino acids from the C-terminal region of human COL8A2.
Formulation:	Purified polyclonal antibody supplied in PBS with 0.09% (W/V) sodium azide.
Concentration:	lot specific
Purification:	This antibody is purified through a protein A column, followed by peptide affinity purification.
Conjugation:	Unconjugated
Storage:	Store at -20°C as received.
Stability:	Stable for 12 months from date of receipt.
Predicted Protein Size:	67244 Da
Gene Name:	collagen type VIII alpha 2
Database Link:	<a href="#">NP_005193</a> <a href="#">Entrez Gene 1296 Human P25067</a>
Synonyms:	FECD; FECD1; PPCD; PPCD2
Protein Families:	Druggable Genome

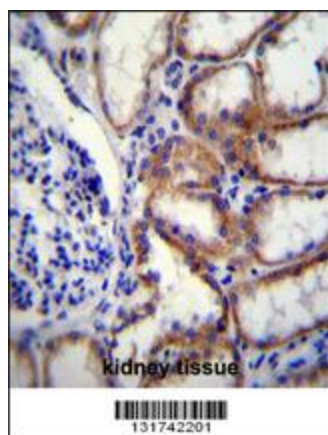


[View online »](#)

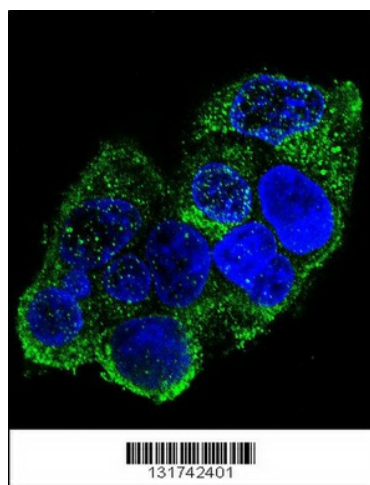
## Product images:



COL8A2 Antibody (C-term) (Cat. #TA324440) western blot analysis in CEM cell line lysates (35ug/lane). This demonstrates the COL8A2 antibody detected the COL8A2 protein (arrow).



COL8A2 Antibody (C-term) (Cat. #TA324440) immunohistochemistry analysis in formalin fixed and paraffin embedded human kidney tissue followed by peroxidase conjugation of the secondary antibody and DAB staining. This data demonstrates the use of COL8A2 Antibody (C-term) for immunohistochemistry. Clinical relevance has not been evaluated.



Confocal immunofluorescent analysis of COL8A2 Antibody (C-term) (Cat#TA324440) with HepG2 cell followed by Alexa Fluor 488-conjugated goat anti-rabbit IgG (green). DAPI was used to stain the cell nuclear (blue).