

Product datasheet for **TA324437**

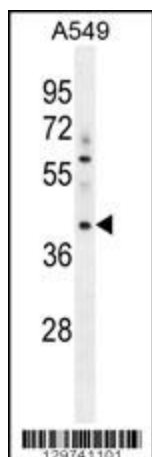
MYBPHL Rabbit Polyclonal Antibody

Product data:

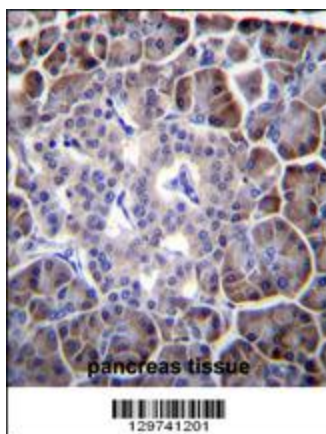
Product Type:	Primary Antibodies
Applications:	FC, IF, IHC, WB
Recommended Dilution:	WB: 1:1000, IHC: 1:10~50, IF: 1:10~50, FC: 1:10~50
Reactivity:	Human
Host:	Rabbit
Isotype:	IgG
Clonality:	Polyclonal
Immunogen:	This MYBPHL antibody is generated from rabbits immunized with a KLH conjugated synthetic peptide between 80-108 amino acids from the N-terminal region of human MYBPHL.
Formulation:	Purified polyclonal antibody supplied in PBS with 0.09% (W/V) sodium azide.
Concentration:	lot specific
Purification:	This antibody is purified through a protein A column, followed by peptide affinity purification.
Conjugation:	Unconjugated
Storage:	Store at -20°C as received.
Stability:	Stable for 12 months from date of receipt.
Predicted Protein Size:	38733 Da
Gene Name:	myosin binding protein H-like
Database Link:	NP_001010985 Entrez Gene 343263 Human A2RUH7
Synonyms:	myosin binding protein H-like; OTTHUMP00000013793

[View online »](#)

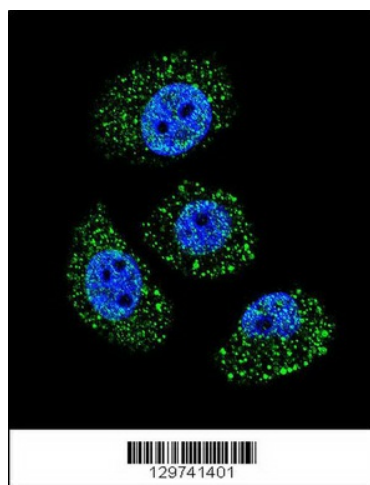
Product images:



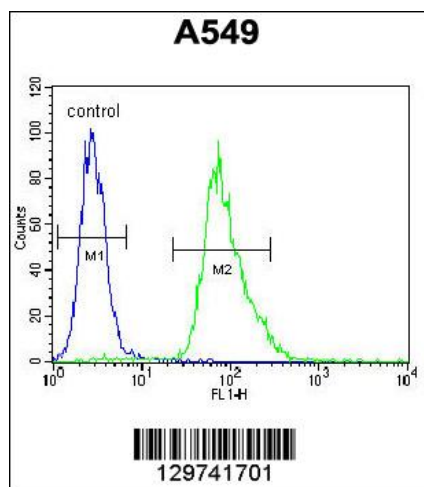
MYBPHL Antibody (N-term) (Cat. #TA324437) western blot analysis in A549 cell line lysates (35ug/lane). This demonstrates the MYBPHL antibody detected the MYBPHL protein (arrow).



MYBPHL Antibody (N-term) (Cat. #TA324437) immunohistochemistry analysis in formalin fixed and paraffin embedded human pancreas tissue followed by peroxidase conjugation of the secondary antibody and DAB staining. This data demonstrates the use of MYBPHL Antibody (N-term) for immunohistochemistry. Clinical relevance has not been evaluated.



Confocal immunofluorescent analysis of MYBPHL Antibody (N-term) (Cat#TA324437) with A549 cell followed by Alexa Fluor 488-conjugated goat anti-rabbit IgG (green). DAPI was used to stain the cell nuclear (blue).



MYBPHL Antibody (N-term) (Cat. #TA324437) flow cytometric analysis of A549 cells (right histogram) compared to a negative control cell (left histogram). FITC-conjugated goat-anti-rabbit secondary antibodies were used for the analysis.