

Product datasheet for **TA324436**

WDR27 Rabbit Polyclonal Antibody

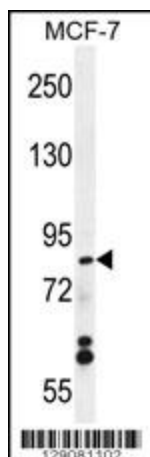
Product data:

Product Type:	Primary Antibodies
Applications:	FC, IF, IHC, WB
Recommended Dilution:	WB: 1:1000, IHC: 1:10~50, IF: 1:10~50, FC: 1:10~50
Reactivity:	Human
Host:	Rabbit
Isotype:	IgG
Clonality:	Polyclonal
Immunogen:	This WDR27 antibody is generated from rabbits immunized with a KLH conjugated synthetic peptide between 228-256 amino acids from the N-terminal region of human WDR27.
Formulation:	Purified polyclonal antibody supplied in PBS with 0.09% (W/V) sodium azide.
Concentration:	lot specific
Purification:	This antibody is purified through a protein A column, followed by peptide affinity purification.
Conjugation:	Unconjugated
Storage:	Store at -20°C as received.
Stability:	Stable for 12 months from date of receipt.
Predicted Protein Size:	90038 Da
Gene Name:	WD repeat domain 27
Database Link:	NP_872358 Entrez Gene 253769 Human A2RRH5
Synonyms:	MGC43690

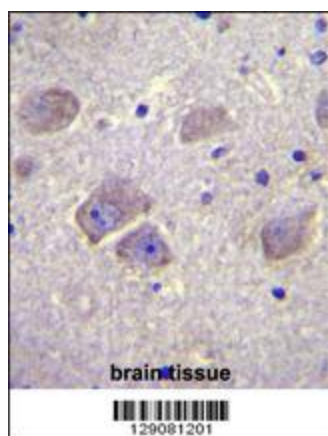


[View online »](#)

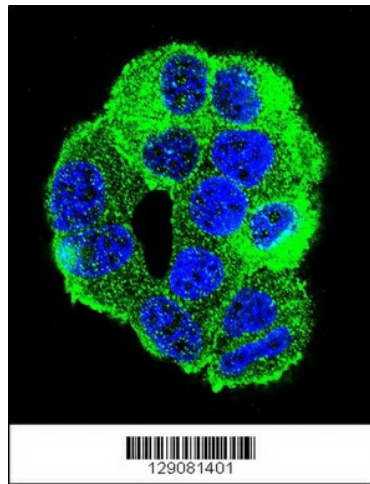
Product images:



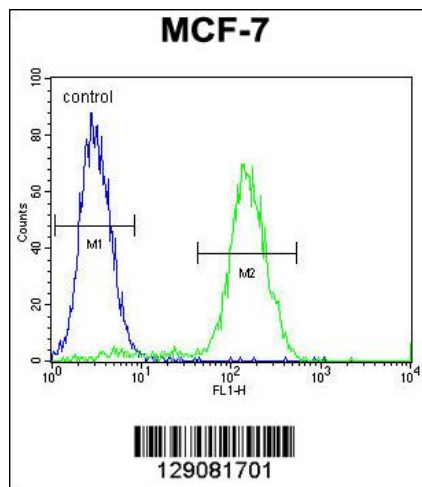
WDR27 Antibody (N-term) (Cat. #TA324436) western blot analysis in MCF-7 cell line lysates (35ug/lane). This demonstrates the WDR27 antibody detected the WDR27 protein (arrow).



WDR27 Antibody (N-term) (Cat. #TA324436) immunohistochemistry analysis in formalin fixed and paraffin embedded human brain tissue followed by peroxidase conjugation of the secondary antibody and DAB staining. This data demonstrates the use of WDR27 Antibody (N-term) for immunohistochemistry. Clinical relevance has not been evaluated.



Confocal immunofluorescent analysis of WDR27 Antibody (N-term) (Cat#TA324436) with MCF-7 cell followed by Alexa Fluor 488-conjugated goat anti-rabbit IgG (green). DAPI was used to stain the cell nuclear (blue).



WDR27 Antibody (N-term) (Cat. #TA324436) flow cytometric analysis of MCF-7 cells (right histogram) compared to a negative control cell (left histogram). FITC-conjugated goat-anti-rabbit secondary antibodies were used for the analysis.