

## Product datasheet for **TA324432**

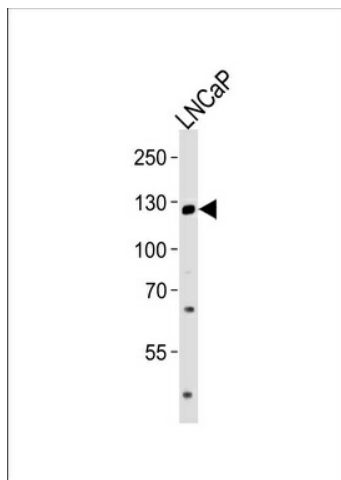
### TRPM8 Rabbit Polyclonal Antibody

#### Product data:

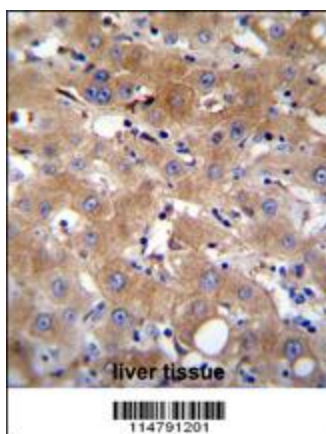
Product Type:	Primary Antibodies
Applications:	IF, IHC, WB
Recommended Dilution:	WB: 1:1000, IHC: 1:50~100, IF: 1:10~50
Reactivity:	Human
Host:	Rabbit
Isotype:	IgG
Clonality:	Polyclonal
Immunogen:	This TRPM8 antibody is generated from rabbits immunized with a KLH conjugated synthetic peptide between 263-292 amino acids from the Central region of human TRPM8.
Formulation:	Purified polyclonal antibody supplied in PBS with 0.09% (W/V) sodium azide.
Concentration:	lot specific
Purification:	This antibody is prepared by Saturated Ammonium Sulfate (SAS) precipitation followed by dialysis against PBS.
Conjugation:	Unconjugated
Storage:	Store at -20°C as received.
Stability:	Stable for 12 months from date of receipt.
Predicted Protein Size:	127685 Da
Gene Name:	transient receptor potential cation channel subfamily M member 8
Database Link:	<a href="#">NP_076985</a> <a href="#">Entrez Gene 79054 Human</a> <a href="#">Q7Z2W7</a>
Synonyms:	LTRPC6; TRPP8
Protein Families:	Druggable Genome, Ion Channels: Transient receptor potential, Transmembrane



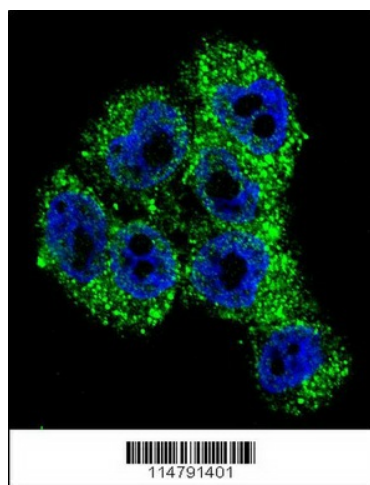
[View online »](#)

**Product images:**

Western blot analysis of lysate from LNCaP cell line, using TRPM8 Antibody (Center) (Cat. #TA324432).TA324432 was diluted at 1:1000 at each lane. A goat anti-rabbit IgG H&L (HRP) at 1:5000 dilution was used as the secondary antibody.Lysate at 35ug per lane.



TRPM8 Antibody (Center) (Cat. #TA324432)immunohistochemistry analysis in formalin fixed and paraffin embedded human liver tissue followed by peroxidase conjugation of the secondary antibody and DAB staining.This data demonstrates the use of TRPM8 Antibody (Center) for immunohistochemistry. Clinical relevance has not been evaluated.



Confocal immunofluorescent analysis of TRPM8 Antibody (Center) (Cat#TA324432) with A375 cell followed by Alexa Fluor 488-conjugated goat anti-rabbit IgG (green). DAPI was used to stain the cell nuclear (blue).