

Product datasheet for **TA324428S**

CREB1 Rabbit Polyclonal Antibody

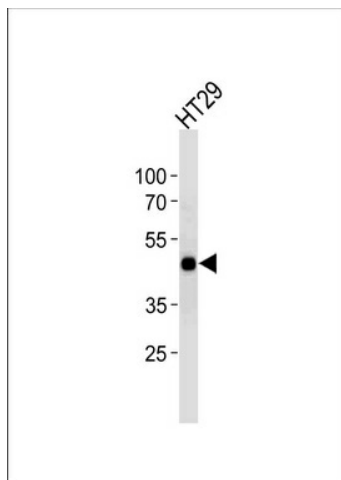
Product data:

Product Type:	Primary Antibodies
Applications:	FC, IF, WB
Recommended Dilution:	IF: 1:10~50, WB: 1:1000, FC: 1:10~50
Reactivity:	Human (Predicted: Mouse, Rat, Bovine)
Host:	Rabbit
Isotype:	IgG
Clonality:	Polyclonal
Immunogen:	This CREB1 antibody is generated from rabbits immunized with a KLH conjugated synthetic peptide between 105-132 amino acids from the Central region of human CREB1.
Formulation:	Purified polyclonal antibody supplied in PBS with 0.09% (W/V) sodium azide.
Concentration:	lot specific
Purification:	This antibody is purified through a protein A column, followed by peptide affinity purification.
Conjugation:	Unconjugated
Storage:	Store at -20°C as received.
Stability:	Stable for 12 months from date of receipt.
Predicted Protein Size:	36688 Da
Gene Name:	cAMP responsive element binding protein 1
Database Link:	NP_004370 Entrez Gene 12912 Mouse Entrez Gene 81646 Rat Entrez Gene 1385 Human P16220
Synonyms:	CREB
Protein Families:	Druggable Genome, Transcription Factors
Protein Pathways:	Antigen processing and presentation, Huntington's disease, Melanogenesis, Prostate cancer

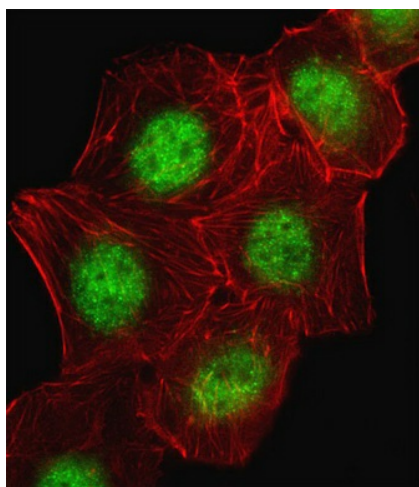


[View online »](#)

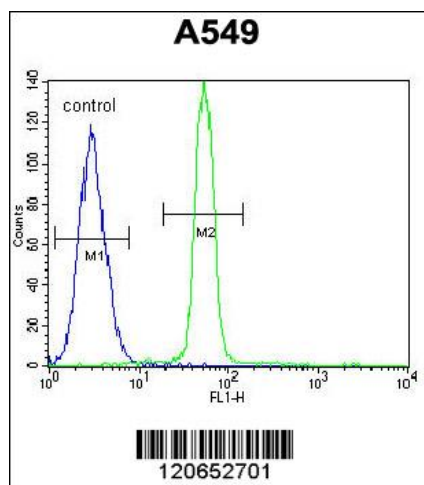
Product images:



CREB1 Antibody (Center) (Cat. #TA324428]) western blot analysis in HT29 cell line lysates (35ug/lane). This demonstrates the CREB1 antibody detected the CREB1 protein (arrow).



IF image of A549 cell stained with CREB1 Antibody (Center) (Cat#[TA324428]). A549 cells were incubated with CREB1 primary antibody (1:25, 1 h at 37°C). For secondary antibody, Alexa Fluor® 488 conjugated donkey anti-rabbit antibody (green) was used (1:400). Cytoplasmic actin was counterstained with Alexa Fluor® 555 (red) conjugated Phalloidin (7 units/ml). CREB1 immunoreactivity is localized to Nucleus significantly.



CREB1 Antibody (Center) (Cat. #[TA324428]) flow cytometric analysis of A549 cells (right histogram) compared to a negative control cell (left histogram). FITC-conjugated goat-anti-rabbit secondary antibodies were used for the analysis.