

## Product datasheet for **TA324427**

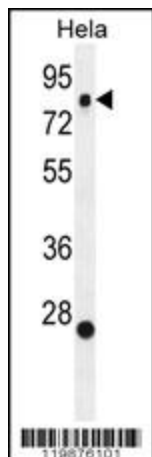
### SSH3 Rabbit Polyclonal Antibody

#### Product data:

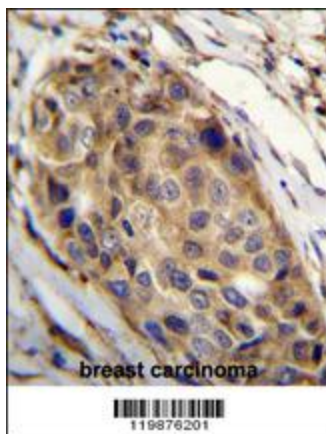
Product Type:	Primary Antibodies
Applications:	FC, IF, IHC, WB
Recommended Dilution:	WB: 1:1000, IHC: 1:50~100, FC: 1:10~50, IF: 1:10~50
Reactivity:	Human
Host:	Rabbit
Isotype:	IgG
Clonality:	Polyclonal
Immunogen:	This SSH3 antibody is generated from rabbits immunized with a KLH conjugated synthetic peptide between 575-602 amino acids from the C-terminal region of human SSH3.
Formulation:	Purified polyclonal antibody supplied in PBS with 0.09% (W/V) sodium azide.
Concentration:	lot specific
Purification:	This antibody is purified through a protein A column, followed by peptide affinity purification.
Conjugation:	Unconjugated
Storage:	Store at -20°C as received.
Stability:	Stable for 12 months from date of receipt.
Predicted Protein Size:	72996 Da
Gene Name:	slingshot protein phosphatase 3
Database Link:	<a href="#">NP_060327</a> <a href="#">Entrez Gene 54961 Human</a> <a href="#">Q8TE77</a>
Synonyms:	SSH3L
Protein Families:	Druggable Genome, Phosphatase
Protein Pathways:	Regulation of actin cytoskeleton



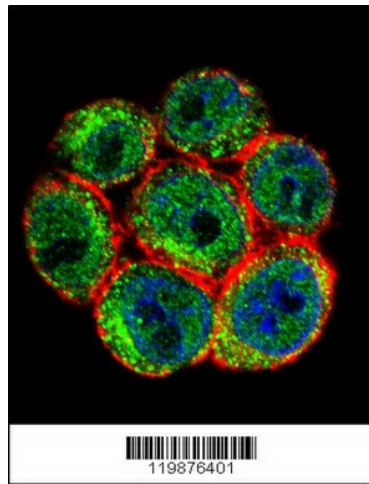
[View online »](#)

**Product images:**

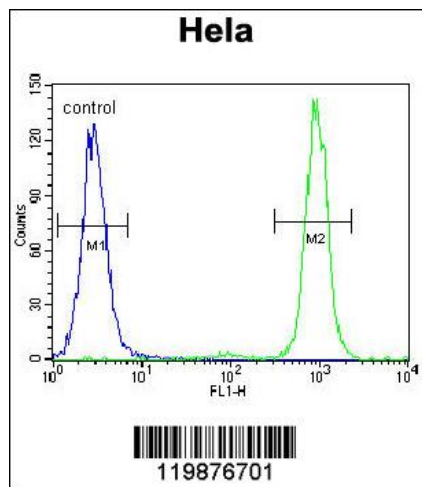
SSH3 Antibody (C-term) (Cat. #TA324427) western blot analysis in HeLa cell line lysates (35ug/lane). This demonstrates the SSH3 antibody detected the SSH3 protein (arrow).



SSH3 Antibody (C-term) (Cat. #TA324427) immunohistochemistry analysis in formalin fixed and paraffin embedded human breast carcinoma followed by peroxidase conjugation of the secondary antibody and DAB staining. This data demonstrates the use of SSH3 Antibody (C-term) for immunohistochemistry. Clinical relevance has not been evaluated.



Confocal immunofluorescent analysis of SSH3 Antibody (C-term) (Cat#TA324427) with HeLa cell followed by Alexa Fluor 488-conjugated goat anti-rabbit IgG (green). Actin filaments have been labeled with Alexa Fluor555 phalloidin (red). DAPI was used to stain the cell nuclear (blue).



SSH3 Antibody (C-term) (Cat. #TA324427) flow cytometric analysis of HeLa cells (right histogram) compared to a negative control cell (left histogram). FITC-conjugated goat-anti-rabbit secondary antibodies were used for the analysis.