

Product datasheet for **TA324426**

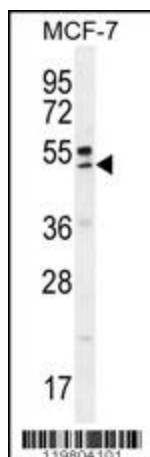
QTRTD1 (QTRT2) Rabbit Polyclonal Antibody

Product data:

Product Type:	Primary Antibodies
Applications:	FC, IF, IHC, WB
Recommended Dilution:	WB: 1:1000, IHC: 1:10~50, IF: 1:10~50, FC: 1:10~50
Reactivity:	Human
Host:	Rabbit
Isotype:	IgG
Clonality:	Polyclonal
Immunogen:	This QTRTD1 antibody is generated from rabbits immunized with a KLH conjugated synthetic peptide between 321-350 amino acids from the C-terminal region of human QTRTD1.
Formulation:	Purified polyclonal antibody supplied in PBS with 0.09% (W/V) sodium azide.
Concentration:	lot specific
Purification:	This antibody is purified through a protein A column, followed by peptide affinity purification.
Conjugation:	Unconjugated
Storage:	Store at -20°C as received.
Stability:	Stable for 12 months from date of receipt.
Predicted Protein Size:	46713 Da
Gene Name:	queuine tRNA-ribosyltransferase accessory subunit 2
Database Link:	NP_078914 Entrez Gene 79691 Human Q9H974
Synonyms:	FLJ12960



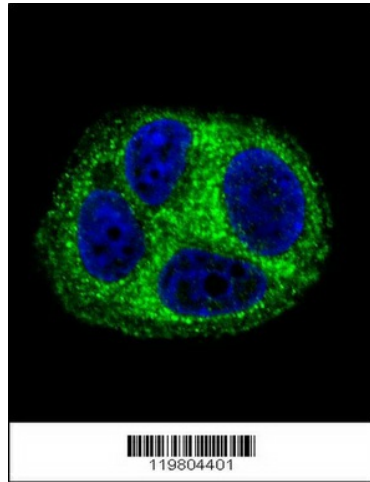
[View online »](#)

Product images:

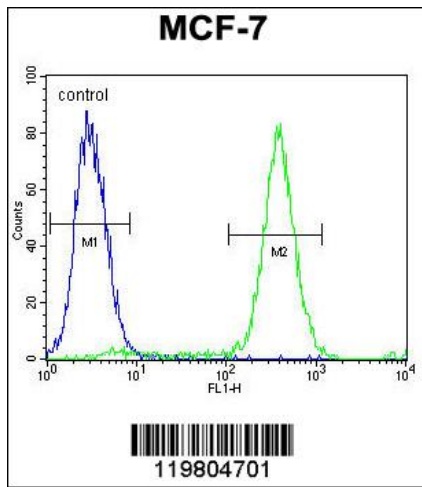
QTRTD1 Antibody (C-term) (Cat. #TA324426) western blot analysis in MCF-7 cell line lysates (35ug/lane). This demonstrates the QTRTD1 antibody detected the QTRTD1 protein (arrow).



QTRTD1 Antibody (C-term) (Cat. #TA324426) immunohistochemistry analysis in formalin fixed and paraffin embedded human breast tissue followed by peroxidase conjugation of the secondary antibody and DAB staining. This data demonstrates the use of QTRTD1 Antibody (C-term) for immunohistochemistry. Clinical relevance has not been evaluated.



Confocal immunofluorescent analysis of QTRTD1 Antibody (C-term) (Cat#TA324426) with MCF-7 cell followed by Alexa Fluor 488-conjugated goat anti-rabbit IgG (green). DAPI was used to stain the cell nuclear (blue).



QTRTD1 Antibody (C-term) (Cat. #TA324426) flow cytometric analysis of MCF-7 cells (right histogram) compared to a negative control cell (left histogram). FITC-conjugated goat-anti-rabbit secondary antibodies were used for the analysis.