

## Product datasheet for **TA324424S**

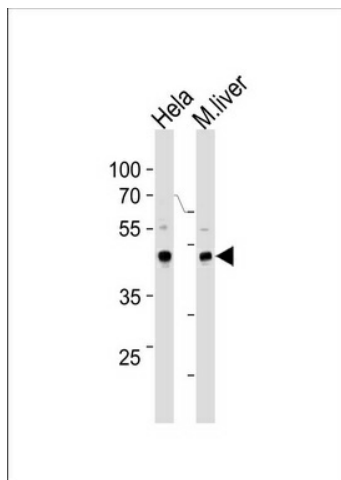
### TBX6 Rabbit Polyclonal Antibody

#### Product data:

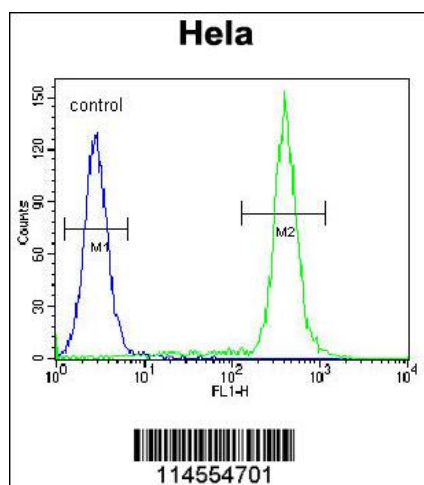
Product Type:	Primary Antibodies
Applications:	FC, WB
Recommended Dilution:	WB: 1:1000, FC: 1:10~50
Reactivity:	Human, Mouse (Predicted: Rat, Bovine)
Host:	Rabbit
Isotype:	IgG
Clonality:	Polyclonal
Immunogen:	This TBX6 antibody is generated from rabbits immunized with a KLH conjugated synthetic peptide between 143-172 amino acids from the Central region of human TBX6.
Formulation:	Purified polyclonal antibody supplied in PBS with 0.09% (W/V) sodium azide.
Concentration:	lot specific
Purification:	This antibody is prepared by Saturated Ammonium Sulfate (SAS) precipitation followed by dialysis against PBS.
Conjugation:	Unconjugated
Storage:	Store at -20°C as received.
Stability:	Stable for 12 months from date of receipt.
Predicted Protein Size:	47045 Da
Gene Name:	T-box 6
Database Link:	<a href="#">NP_004599</a> <a href="#">Entrez Gene 21389 Mouse</a> <a href="#">Entrez Gene 365371 Rat</a> <a href="#">Entrez Gene 6911 Human</a> <a href="#">O95947</a>
Synonyms:	SCDO5
Protein Families:	Transcription Factors



[View online »](#)

**Product images:**


TBX6 Antibody (Center W158) (Cat. #TA324424) western blot analysis in HeLa cell line and mouse liver tissue lysates (35ug/lane). This demonstrates the TBX6 antibody detected the TBX6 protein (arrow).



TBX6 Antibody (Center W158) (Cat. #TA324424) flow cytometric analysis of HeLa cells (right histogram) compared to a negative control cell (left histogram). FITC-conjugated goat-anti-rabbit secondary antibodies were used for the analysis.