

## Product datasheet for **TA324423**

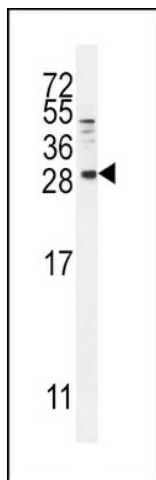
### Betacellulin (BTC) Rabbit Polyclonal Antibody

#### Product data:

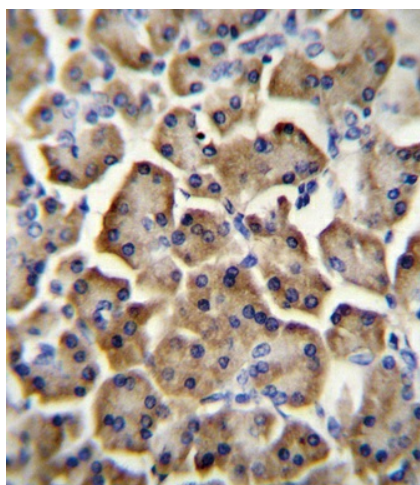
Product Type:	Primary Antibodies
Applications:	FC, IF, IHC, WB
Recommended Dilution:	WB: 1:1000, IHC: 1:10~50, IF: 1:10~50, FC: 1:10~50
Reactivity:	Human
Host:	Rabbit
Isotype:	IgG
Clonality:	Polyclonal
Immunogen:	This BTC antibody is generated from rabbits immunized with a KLH conjugated synthetic peptide between 17-45 amino acids from the N-terminal region of human BTC.
Formulation:	Purified polyclonal antibody supplied in PBS with 0.09% (W/V) sodium azide.
Concentration:	lot specific
Purification:	This antibody is prepared by Saturated Ammonium Sulfate (SAS) precipitation followed by dialysis against PBS.
Conjugation:	Unconjugated
Storage:	Store at -20°C as received.
Stability:	Stable for 12 months from date of receipt.
Predicted Protein Size:	19746 Da
Gene Name:	betacellulin
Database Link:	<a href="#">NP_001720</a> <a href="#">Entrez Gene 685 Human</a> <a href="#">P35070</a>
Synonyms:	betacellulin; OTTHUMP00000160600
Protein Families:	Druggable Genome, ES Cell Differentiation/IPS, Secreted Protein, Transmembrane
Protein Pathways:	ErbB signaling pathway



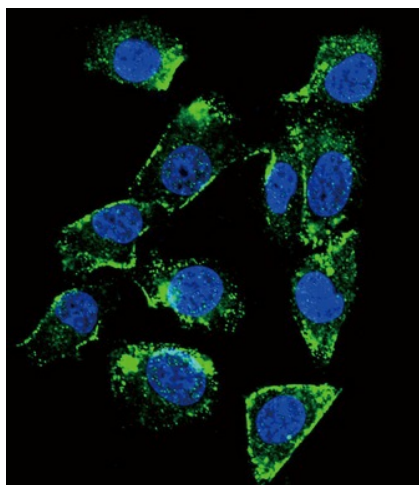
[View online »](#)

**Product images:**

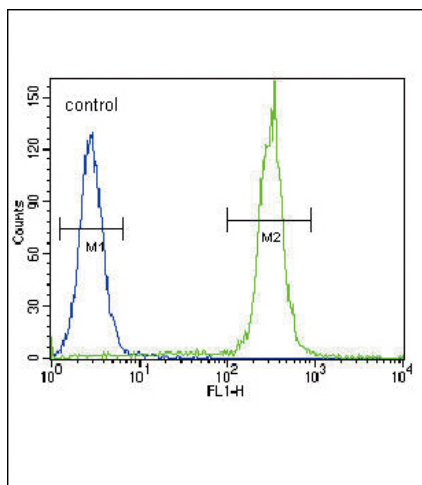
BTC Antibody (N-term) (Cat. #TA324423) western blot analysis in MDA-MB231 cell line lysates (35ug/lane). This demonstrates the BTC antibody detected the BTC protein (arrow).



BTC Antibody (N-term) (Cat. #TA324423) immunohistochemistry analysis in formalin fixed and paraffin embedded human pancreas tissue followed by peroxidase conjugation of the secondary antibody and DAB staining. This data demonstrates the use of BTC Antibody (N-term) for immunohistochemistry. Clinical relevance has not been evaluated.



Confocal immunofluorescent analysis of BTC Antibody (N-term) (Cat#TA324423) with MDA-MB231 cell followed by Alexa Fluor 488-conjugated goat anti-rabbit IgG (green). DAPI was used to stain the cell nuclear (blue).



BTC Antibody (N-term) (Cat. #TA324423) flow cytometric analysis of HeLa cells (right histogram) compared to a negative control cell (left histogram). FITC-conjugated goat-anti-rabbit secondary antibodies were used for the analysis.