

Product datasheet for **TA324422S**

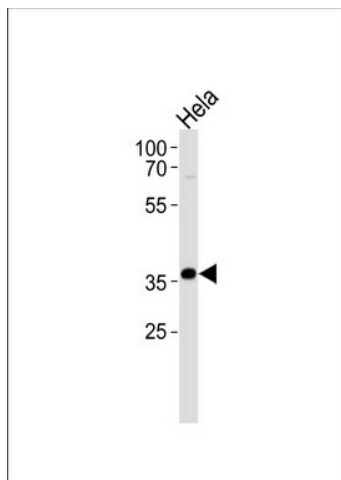
AKR1C3 Rabbit Polyclonal Antibody

Product data:

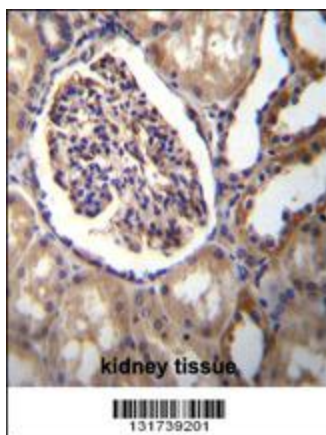
Product Type:	Primary Antibodies
Applications:	IHC, WB
Recommended Dilution:	WB: 1:1000, IHC: 1:10~50
Reactivity:	Human
Host:	Rabbit
Isotype:	IgG
Clonality:	Polyclonal
Immunogen:	This AKR1C3 antibody is generated from rabbits immunized with a KLH conjugated synthetic peptide between 107-135 amino acids from the Central region of human AKR1C3.
Formulation:	Purified polyclonal antibody supplied in PBS with 0.09% (W/V) sodium azide.
Concentration:	lot specific
Purification:	This antibody is purified through a protein A column, followed by peptide affinity purification.
Conjugation:	Unconjugated
Storage:	Store at -20°C as received.
Stability:	Stable for 12 months from date of receipt.
Predicted Protein Size:	36853 Da
Gene Name:	aldo-keto reductase family 1, member C3
Database Link:	NP_003730 Entrez Gene 8644 Human P42330
Synonyms:	DD3; DDX; HA1753; HAKRB; HAKRe; hluPGFS; HSD17B5; PGFS
Protein Families:	Druggable Genome
Protein Pathways:	Arachidonic acid metabolism, Metabolism of xenobiotics by cytochrome P450



[View online »](#)

Product images:

AKR1C3 Antibody (Center) (Cat. # [TA324422]) western blot analysis in HeLa cell line lysates (35ug/lane). This demonstrates the AKR1C3 antibody detected the AKR1C3 protein (arrow).



AKR1C3 Antibody (Center) (Cat. # [TA324422]) immunohistochemistry analysis in formalin fixed and paraffin embedded human kidney tissue followed by peroxidase conjugation of the secondary antibody and DAB staining. This data demonstrates the use of AKR1C3 Antibody (Center) for immunohistochemistry. Clinical relevance has not been evaluated.