

Product datasheet for **TA324421S**

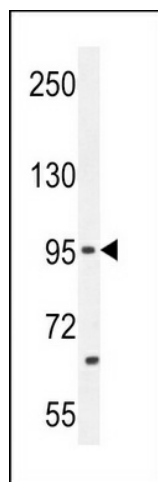
PCDH20 Rabbit Polyclonal Antibody

Product data:

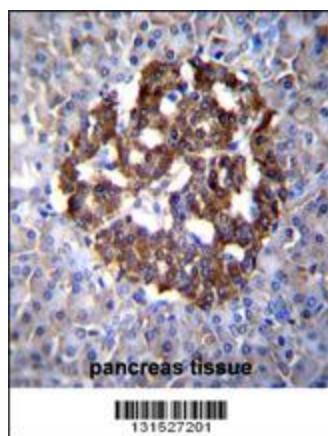
Product Type:	Primary Antibodies
Applications:	FC, IF, IHC, WB
Recommended Dilution:	WB: 1:1000, IHC: 1:10~50, IF: 1:10~50, FC: 1:10~50
Reactivity:	Human
Host:	Rabbit
Isotype:	IgG
Clonality:	Polyclonal
Immunogen:	This PCDH20 antibody is generated from rabbits immunized with a KLH conjugated synthetic peptide between 445-472 amino acids from the Central region of human PCDH20.
Formulation:	Purified polyclonal antibody supplied in PBS with 0.09% (W/V) sodium azide.
Concentration:	lot specific
Purification:	This antibody is purified through a protein A column, followed by peptide affinity purification.
Conjugation:	Unconjugated
Storage:	Store at -20°C as received.
Stability:	Stable for 12 months from date of receipt.
Predicted Protein Size:	104919 Da
Gene Name:	protocadherin 20
Database Link:	NP_073754 Entrez Gene 64881 Human Q8N6Y1
Synonyms:	PCDH13
Protein Families:	Druggable Genome, Transmembrane


[View online »](#)

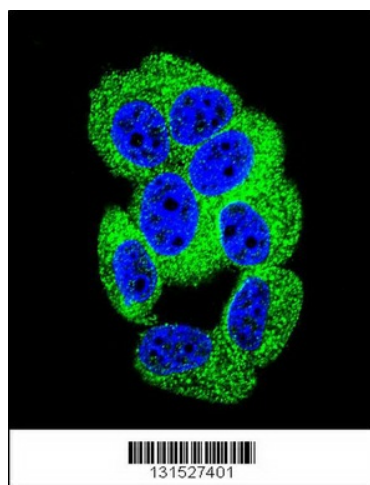
Product images:



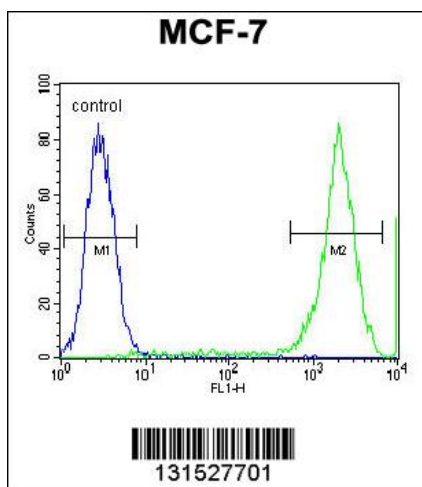
PCDH20 Antibody (Center) (Cat. # [TA324421]) western blot analysis in MCF-7 cell line lysates (35ug/lane). This demonstrates the PCDH20 antibody detected the PCDH20 protein (arrow).



PCDH20 Antibody (Center) (Cat. # [TA324421]) immunohistochemistry analysis in formalin fixed and paraffin embedded human pancreas tissue followed by peroxidase conjugation of the secondary antibody and DAB staining. This data demonstrates the use of PCDH20 Antibody (Center) for immunohistochemistry. Clinical relevance has not been evaluated.



Confocal immunofluorescent analysis of PCDH20 Antibody (Center) (Cat#[TA324421]) with MCF-7 cell followed by Alexa Fluor 488-conjugated goat anti-rabbit IgG (green). DAPI was used to stain the cell nuclear (blue).



PCDH20 Antibody (Center) (Cat. #[TA324421]) flow cytometric analysis of MCF-7 cells (right histogram) compared to a negative control cell (left histogram). FITC-conjugated goat-anti-rabbit secondary antibodies were used for the analysis.