

Product datasheet for **TA324420S**

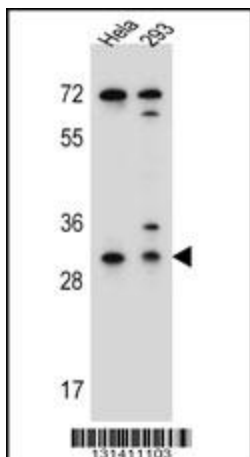
Ephrin B2 (EFNB2) Rabbit Polyclonal Antibody

Product data:

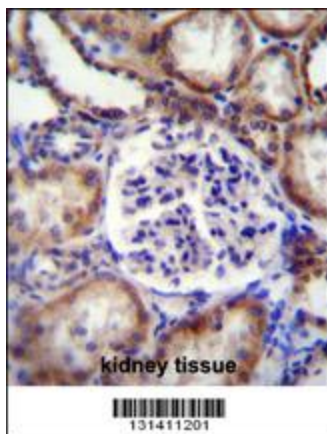
Product Type:	Primary Antibodies
Applications:	IF, IHC, WB
Recommended Dilution:	IHC: 1:10~50, WB: 1:1000, IF: 1:10~50
Reactivity:	Human
Host:	Rabbit
Isotype:	IgG
Clonality:	Polyclonal
Immunogen:	This EFNB2 antibody is generated from rabbits immunized with a KLH conjugated synthetic peptide between 157-186 amino acids from the Central region of human EFNB2.
Formulation:	Purified polyclonal antibody supplied in PBS with 0.09% (W/V) sodium azide.
Concentration:	lot specific
Purification:	This antibody is purified through a protein A column, followed by peptide affinity purification.
Conjugation:	Unconjugated
Storage:	Store at -20°C as received.
Stability:	Stable for 12 months from date of receipt.
Predicted Protein Size:	36923 Da
Gene Name:	ephrin B2
Database Link:	NP_004084 Entrez Gene 1948 Human P52799
Synonyms:	EPLG5; Htk-L; HTKL; LERK5
Protein Families:	Druggable Genome, Transmembrane
Protein Pathways:	Axon guidance

[View online »](#)

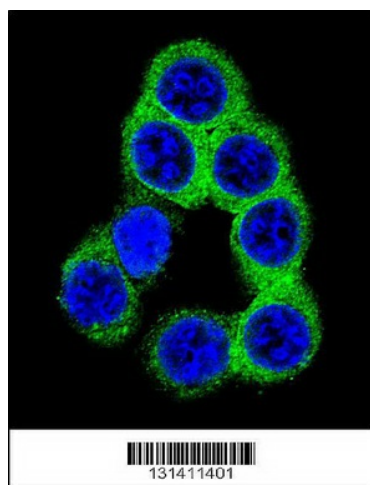
Product images:



EFNB2 Antibody (Center) (Cat. # [TA324420]) western blot analysis in HeLa, 293 cell line lysates (35ug/lane). This demonstrates the EFNB2 antibody detected the EFNB2 protein (arrow).



EFNB2 Antibody (Center) (Cat. # [TA324420]) immunohistochemistry analysis in formalin fixed and paraffin embedded human kidney tissue followed by peroxidase conjugation of the secondary antibody and DAB staining. This data demonstrates the use of EFNB2 Antibody (Center) for immunohistochemistry. Clinical relevance has not been evaluated.



Confocal immunofluorescent analysis of EFNB2 Antibody (Center) (Cat#[TA324420]) with 293 cell followed by Alexa Fluor 488-conjugated goat anti-rabbit IgG (green). DAPI was used to stain the cell nuclear (blue).