

Product datasheet for **TA324419S**

ADA Rabbit Polyclonal Antibody

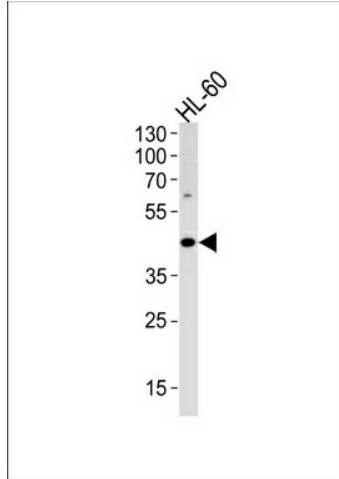
Product data:

Product Type:	Primary Antibodies
Applications:	FC, WB
Recommended Dilution:	WB: 1:1000, FC: 1:10~50
Reactivity:	Human
Host:	Rabbit
Isotype:	IgG
Clonality:	Polyclonal
Immunogen:	This ADA antibody is generated from rabbits immunized with a KLH conjugated synthetic peptide between 287-314 amino acids from the C-terminal region of human ADA.
Formulation:	Purified polyclonal antibody supplied in PBS with 0.09% (W/V) sodium azide.
Concentration:	lot specific
Purification:	This antibody is purified through a protein A column, followed by peptide affinity purification.
Conjugation:	Unconjugated
Storage:	Store at -20°C as received.
Stability:	Stable for 12 months from date of receipt.
Predicted Protein Size:	40764 Da
Gene Name:	adenosine deaminase
Database Link:	NP_000013 Entrez Gene 100 Human P00813
Synonyms:	adenosine aminohydrolase; adenosine deaminase
Protein Families:	Druggable Genome
Protein Pathways:	Metabolic pathways, Primary immunodeficiency, Purine metabolism

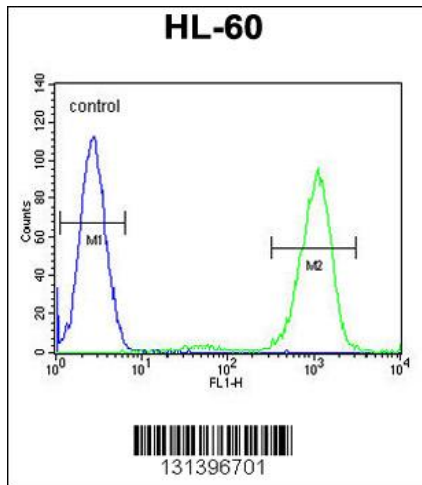


[View online »](#)

Product images:



ADA Antibody (C-term) (Cat. #[TA324419]) western blot analysis in HL-60 cell line lysates (35ug/lane). This demonstrates the ADA antibody detected the ADA protein (arrow).



ADA Antibody (C-term) (Cat. #[TA324419]) flow cytometric analysis of HL-60 cells (right histogram) compared to a negative control cell (left histogram). FITC-conjugated goat-anti-rabbit secondary antibodies were used for the analysis.