

Product datasheet for **TA324418**

GALNS Rabbit Polyclonal Antibody

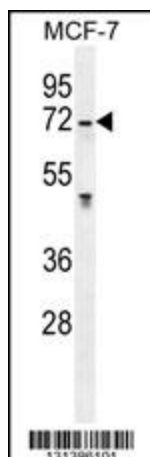
Product data:

Product Type:	Primary Antibodies
Applications:	FC, IF, IHC, WB
Recommended Dilution:	WB: 1:1000, IHC: 1:10~50, IF: 1:10~50, FC: 1:10~50
Reactivity:	Human (Predicted: Mouse, Rat, Pig)
Host:	Rabbit
Isotype:	IgG
Clonality:	Polyclonal
Immunogen:	This GALNS antibody is generated from rabbits immunized with a KLH conjugated synthetic peptide between 236-263 amino acids from the Central region of human GALNS.
Formulation:	Purified polyclonal antibody supplied in PBS with 0.09% (W/V) sodium azide.
Concentration:	lot specific
Purification:	This antibody is purified through a protein A column, followed by peptide affinity purification.
Conjugation:	Unconjugated
Storage:	Store at -20°C as received.
Stability:	Stable for 12 months from date of receipt.
Predicted Protein Size:	58026 Da
Gene Name:	galactosamine (N-acetyl)-6-sulfatase
Database Link:	NP_000503 Entrez Gene 50917 Mouse Entrez Gene 292073 Rat Entrez Gene 2588 Human P34059
Synonyms:	GalN6S; GALNAC6S; GAS; MPS4A
Protein Families:	Druggable Genome
Protein Pathways:	Glycosaminoglycan degradation, Lysosome, Metabolic pathways

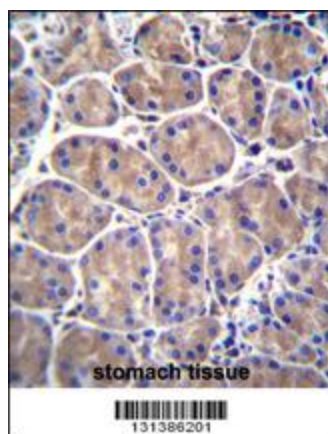


[View online »](#)

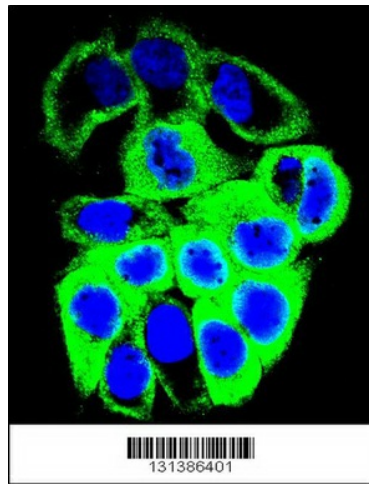
Product images:



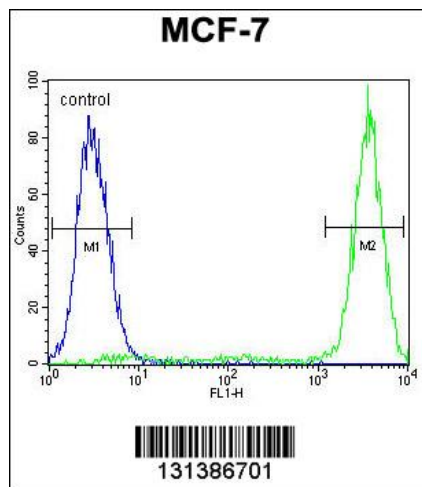
GALNS Antibody (Center) (Cat. #TA324418) western blot analysis in MCF-7 cell line lysates (35ug/lane). This demonstrates the GALNS antibody detected the GALNS protein (arrow).



GALNS Antibody (Center) (Cat. #TA324418) immunohistochemistry analysis in formalin fixed and paraffin embedded human stomach tissue followed by peroxidase conjugation of the secondary antibody and DAB staining. This data demonstrates the use of GALNS Antibody (Center) for immunohistochemistry. Clinical relevance has not been evaluated.



Confocal immunofluorescent analysis of GALNS Antibody (Center) (Cat#TA324418) with MCF-7 cell followed by Alexa Fluor 488-conjugated goat anti-rabbit IgG (green). DAPI was used to stain the cell nuclear (blue).



GALNS Antibody (Center) (Cat. #TA324418) flow cytometric analysis of MCF-7 cells (right histogram) compared to a negative control cell (left histogram). FITC-conjugated goat-anti-rabbit secondary antibodies were used for the analysis.