

Product datasheet for **TA324414S**

PLD5 Rabbit Polyclonal Antibody

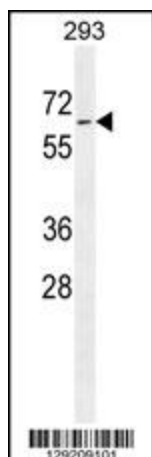
Product data:

Product Type:	Primary Antibodies
Applications:	IF, IHC, WB
Recommended Dilution:	WB: 1:1000, IHC: 1:10~50, IF: 1:10~50
Reactivity:	Human
Host:	Rabbit
Isotype:	IgG
Clonality:	Polyclonal
Immunogen:	This PLD5 antibody is generated from rabbits immunized with a KLH conjugated synthetic peptide between 508-536 amino acids from the C-terminal region of human PLD5.
Formulation:	Purified polyclonal antibody supplied in PBS with 0.09% (W/V) sodium azide.
Concentration:	lot specific
Purification:	This antibody is purified through a protein A column, followed by peptide affinity purification.
Conjugation:	Unconjugated
Storage:	Store at -20°C as received.
Stability:	Stable for 12 months from date of receipt.
Predicted Protein Size:	61312 Da
Gene Name:	phospholipase D family member 5
Database Link:	NP_689879 Entrez Gene 200150 Human Q8N7P1
Synonyms:	PLDC

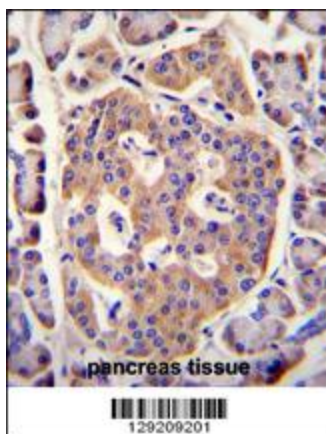


[View online »](#)

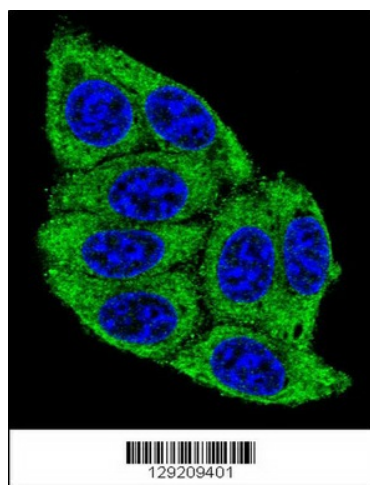
Product images:



PLD5 Antibody (C-term) (Cat. # [TA324414]) western blot analysis in 293 cell line lysates (35ug/lane). This demonstrates the PLD5 antibody detected the PLD5 protein (arrow).



PLD5 Antibody (C-term) (Cat. # [TA324414]) immunohistochemistry analysis in formalin fixed and paraffin embedded human pancreas tissue followed by peroxidase conjugation of the secondary antibody and DAB staining. This data demonstrates the use of PLD5 Antibody (C-term) for immunohistochemistry. Clinical relevance has not been evaluated.



Confocal immunofluorescent analysis of PLD5 Antibody (C-term) (Cat#[TA324414]) with 293 cell followed by Alexa Fluor? 488-conjugated goat anti-rabbit IgG (green). DAPI was used to stain the cell nuclear (blue).