

## Product datasheet for **TA324413**

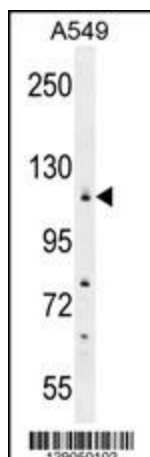
### WDR52 (CFAP44) Rabbit Polyclonal Antibody

#### Product data:

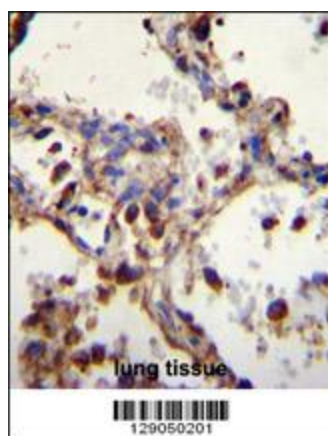
Product Type:	Primary Antibodies
Applications:	FC, IF, IHC, WB
Recommended Dilution:	WB: 1:1000, IHC: 1:50~100, IF: 1:10~50, FC: 1:10~50
Reactivity:	Human
Host:	Rabbit
Isotype:	IgG
Clonality:	Polyclonal
Immunogen:	This WDR52 antibody is generated from rabbits immunized with a KLH conjugated synthetic peptide between 768-797 amino acids from the C-terminal region of human WDR52.
Formulation:	Purified polyclonal antibody supplied in PBS with 0.09% (W/V) sodium azide.
Concentration:	lot specific
Purification:	This antibody is purified through a protein A column, followed by peptide affinity purification.
Conjugation:	Unconjugated
Storage:	Store at -20°C as received.
Stability:	Stable for 12 months from date of receipt.
Predicted Protein Size:	111729 Da
Gene Name:	cilia and flagella associated protein 44
Database Link:	<a href="#">NP_060808</a> <a href="#">Entrez Gene 55779 Human</a> <a href="#">Q96MT7</a>
Synonyms:	WDR52



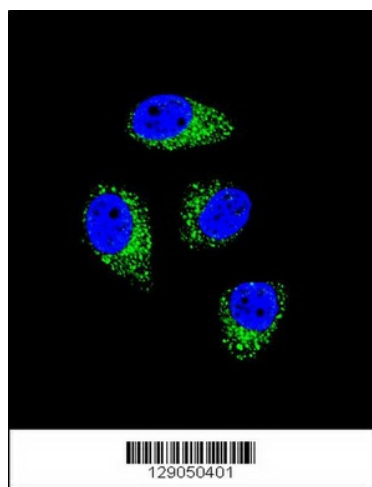
[View online »](#)

**Product images:**

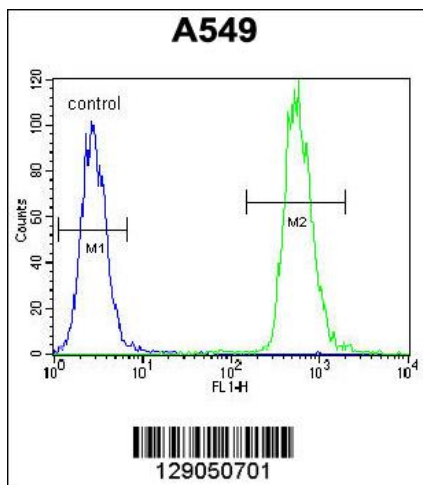
WDR52 Antibody (C-term) (Cat. #TA324413) western blot analysis in A549 cell line lysates (35ug/lane). This demonstrates the WDR52 antibody detected the WDR52 protein (arrow).



WDR52 Antibody (C-term) (Cat. #TA324413) immunohistochemistry analysis in formalin fixed and paraffin embedded human lung tissue followed by peroxidase conjugation of the secondary antibody and DAB staining. This data demonstrates the use of WDR52 Antibody (C-term) for immunohistochemistry. Clinical relevance has not been evaluated.



Confocal immunofluorescent analysis of WDR52 Antibody (C-term) (Cat#TA324413) with A549 cell followed by Alexa Fluor 488-conjugated goat anti-rabbit IgG (green). DAPI was used to stain the cell nuclear (blue).



WDR52 Antibody (C-term) (Cat. #TA324413) flow cytometric analysis of A549 cells (right histogram) compared to a negative control cell (left histogram). FITC-conjugated goat-anti-rabbit secondary antibodies were used for the analysis.