

## Product datasheet for **TA324412**

### TCF21 Rabbit Polyclonal Antibody

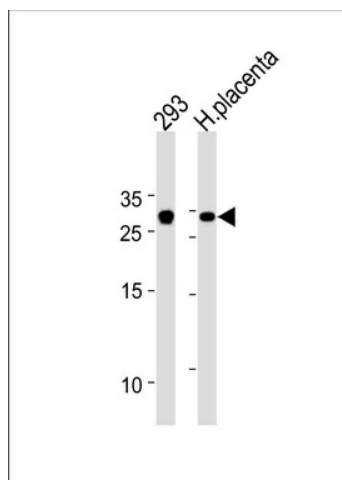
#### Product data:

Product Type:	Primary Antibodies
Applications:	FC, WB
Recommended Dilution:	WB: 1:1000, FC: 1:10~50
Reactivity:	Human (Predicted: Bovine)
Host:	Rabbit
Isotype:	IgG
Clonality:	Polyclonal
Immunogen:	This TCF21 antibody is generated from rabbits immunized with a KLH conjugated synthetic peptide between 144-173 amino acids from the C-terminal region of human TCF21.
Formulation:	Purified polyclonal antibody supplied in PBS with 0.09% (W/V) sodium azide.
Concentration:	lot specific
Purification:	This antibody is purified through a protein A column, followed by peptide affinity purification.
Conjugation:	Unconjugated
Storage:	Store at -20°C as received.
Stability:	Stable for 12 months from date of receipt.
Predicted Protein Size:	19715 Da
Gene Name:	transcription factor 21
Database Link:	<a href="#">NP_003197</a> <a href="#">Entrez Gene 6943 Human</a> <a href="#">O43680</a>
Synonyms:	bHLHa23; POD1
Protein Families:	Druggable Genome, Transcription Factors

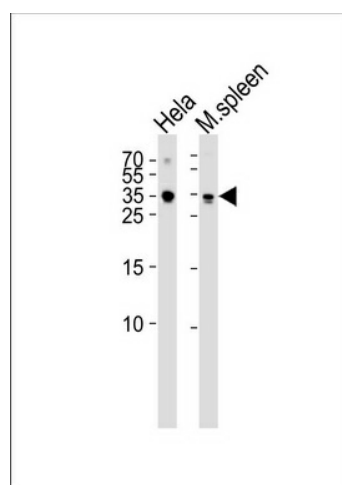


[View online »](#)

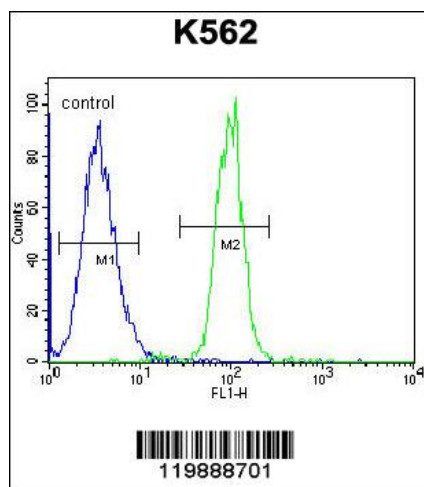
## Product images:



TCF21 Antibody (C-term) (Cat. #TA324412) western blot analysis in 293 cell line and human placenta tissue lysates (35ug/lane). This demonstrates the TCF21 antibody detected the TCF21 protein (arrow).



Western blot analysis of lysates from HeLa cell line mouse spleen tissue lysate (from left to right), using TCF21 Antibody (C-term) (Cat. #TA324412). TA324412 was diluted at 1:1000 at each lane. A goat anti-rabbit IgG H&L (HRP) at 1:5000 dilution was used as the secondary antibody. Lysates at 35ug per lane.



TCF21 Antibody (C-term) (Cat. #TA324412) flow cytometric analysis of K562 cells (right histogram) compared to a negative control cell (left histogram). FITC-conjugated goat-anti-rabbit secondary antibodies were used for the analysis.